

# BRUHNS

AUCTION GALLERY, INC.

*Fall 2015 Catalog*



## FALL ANTIQUE ESTATES AUCTION

October 31, 2015 @ 11AM



*Established in 1974, Bruhns Auction Gallery has established a reputation as the West's leading auction company!*



# AUCTION HIGHLIGHTS



Selling Colorado Springs private estate, granddaughter of the Maytag family, with additions to this special fall auction. Featuring over 1000 pieces of rare Chinese antiques! Rosewood furniture, antique clocks, artwork, snuff bottles, Jade carvings, Ivory carvings, Meissen porcelain, antique Kutani pieces, plus a collection of American primitives.



**Lot # 1-** Pair of antique Chinese blanc-de-chine statues. Lady sitting on Foo Dog and elephant. Ca. 1910. 12" t x 9" w. Est. \$200-\$350.



**Lot # 2 -** Antique Chinese blanc-de-chine statue. Ca. 1910. 21" t x 10" w. Est. \$225-\$375.



**Lot #3 -** Pair of Jade plaques with applied floral carvings on Rosewood bases. Ca. 1920. 16" t x 8" w. Est. \$150-\$275.



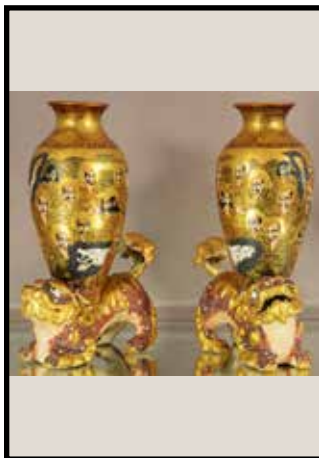
**Lot#4-** Chinese blanc-de-chine statue of a standing woman. 12" t. Est. \$125-\$300.



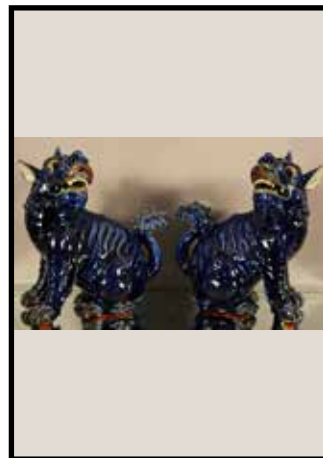
**Lot #5 -** Pair of Meissen porcelain statues. Man and woman playing musical instruments. Signed. Ca. 1920. 13" x 12" t. Est. \$275-\$400.



**Lot #6 -** Pair of T.F. & S porcelain vases. Hand painted Chinese design, raised enameled. Signed on bottom T.F. & S. English. 10" t x 6" d. Est. \$175-\$350.



**Lot #7 -** Pair of Satsuma vases, gilted and hand decorated with raised enamel. Ca. 1900. 9½" x 6" w. Est. \$225-\$400.



**Lot # 8-** Pair of antique Chinese blue porcelain foo dogs. Ca. 1910. 11" t x 10" w. Est. \$275-\$450.



**Lot#9-** Pair of Chinese porcelain foo dogs on pedestal. Ca. 1910. 11" t x 10" w. Est. \$150-\$275.



**Lot#10-** Chinese hard-stone carved man and serpent. Ca. 1920. 11" t. Est. \$125-\$250.



**Lot#11-** Chinese enameled and gilted porcelain server. Ca. 1910. 9" t x 7" w. Est. \$100-\$175.



**Lot#12-** LLADRO figural Japanese woman with floral vase. 8" t. Est. \$100-\$175.





**Lot # 13** - LLADRO figural Japanese woman with basket. 9" t. Est. \$100-\$175.



**Lot#14**- Two LLADRO Japanese figures of women. 8" x 7" t. \$100-\$175.



**Lot#15** - Chinese Rose Medallion 12" bowl. Decorated inside and out. Ca. 1900. 12" d. Est. \$225-\$400.



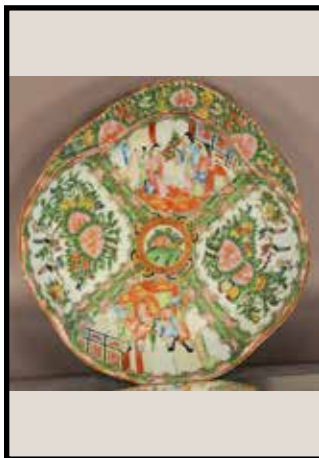
**Lot#16**- Chinese Rose Medallion bowl on rosewood stand. Small hairline. Ca. 1900. 16½" d. Est. \$600-\$900.



**Lot #17**- Chinese Rose Medallion oval bowl. Ca. 1900. 13" L x 7½" w. Est. \$200-\$400.



**Lot #18** - Chinese Rose Medallion tea pot. Ca. 1900. 6" t. Est. \$150-\$275.



**Lot #19** -Unusual Rose Medallion low bowl. Ca. 1900. 10½" t. Est. \$150-\$275.



**Lot #20** - Chinese Rose Medallion tea pot. Ca. 1900. 8" t. Est. \$175-\$325.



**Lot # 21** - Six Chinese Rose Medallion rice bowls. Ca. 1900. Est. \$225-\$400.



**Lot # 22** - Antique Kutani porcelain coffee pot. Hand decorated. Signed on bottom. Ca. 1910. 14" t. Est. \$275-\$450.



**Lot # 23** - Antique Kutani covered jar. Hand decorated porcelain, signed on bottom. ca. 1910. 7" t. Est. \$100-\$175.



**Lot # 24** - Antique Kutani 3 piece tea set. Hand decorated, signed on bottom. Tea pot 8" cream-er 5 ½" t sugar 6" t. Est. \$225-\$350.



**Lot #25** - Antique Kutani covered jar. Est. \$100-\$175.



**Lot #26** - Seven antique Kutani pieces. Hand decorated. Ca. 1910. Est. \$200-\$375.



**Lot # 27** - Four hand painted plates. Signed on bottom. Ca. 1920. 6" d. Est. \$40-\$60.



**Lot # 28** - Meissen porcelain three piece desk set. Signed on bottom. Ca. 1920. Est. \$75-\$100.



**Lot #29** - Pair of Chinese Jade carved birds. Ca. 1920 12" t. Est. \$350-\$700.



**Lot #30** - Antique Chinese Jade carved bird. Ca. 1920. 12" L. Est. \$225-\$375.



**Lot#31** - Antique Chinese Jade covered jar on stand. Ca. 1920. 8" t. Est. \$200-\$350.



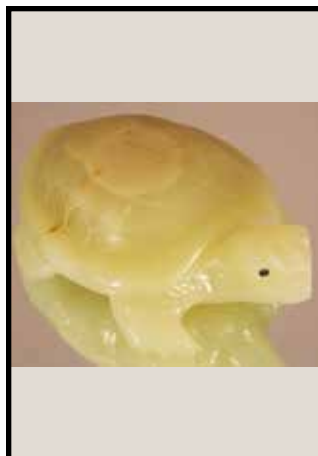
**Lot # 32** - Chinese Jade water buffalo. Ca. 1920. 10" L. Est. \$275-\$400.



**Lot#33** - Chinese Jade bird. Ca. 1920. 4" t. Est. \$175-\$300.



**Lot#34**- Chinese Jade carving, three birds in a tree. 9" t. Est. \$225-\$375.



**Lot #35**- Chinese Jade carving of turtle. 6" L. Est. \$175-\$300.



**Lot #36**- Chinese Jade carving, four birds in a tree. 7" t. Est. \$250-\$375.





**Lot #37** - Two Jade carvings, water buffalo and bird. 3½" x 4" L. Est. \$150-\$250.



**Lot # 38** - Antique Jade sensor with dragon on top, some losses. Ca. 1910. 10½" t. Est. \$175-\$350.



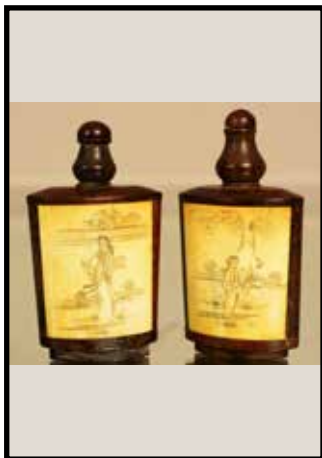
**Lot#39**-Chinese Jade snuff bottle, scenic etched carving on stand. Ca. 1920. 3" t. Est. \$100-\$250.



**Lot#40** - Chinese hard stone snuff bottle with carving of dragon on stand. 4" t. Est. \$75-\$150.



**Lot # 41** - Chinese antique Ivory snuff bottle with scenic etched design on stand. Ca. 1910. 3" t. Est. \$150-\$275.



**Lot#42** - Two Chinese snuff bottles with Rosewood etched panels. 3½" t. Est. \$75-\$200.



**Lot#43**- Chinese decorated hard stone and metal snuff bottle on wood stand. 5" t. Est. \$125-\$250.



**Lot # 44** - Chinese hard stone and metal snuff bottle with scenic carved panels. 5" t. Est. \$125-\$250.



**Lot#45**-Chinese hard stone and metal snuff bottle with scenic carved panels. 6" t. Est. \$125-\$250.



**Lot # 46** - Chinese hard stone and metal snuff bottle. 3" t. Est \$100-\$175.



**Lot # 47** - Chinese enameled snuff bottle on wood stand. 3½" t. Est. \$75-\$150.



**Lot #48**-Chinese snuff bottle with portrait of man. 4½" t. Est. \$75-\$150.



**Lot #49-** Antique Chinese Ivory snuff bottle with carving on wood stand. Ca. 1910. 3½" t. Est. \$150-\$275.



**Lot#50** - Antique Chinese Ivory snuff bottle with scenic carved panels. Ca. 1910. 3½" t. Est. \$150-\$275.



**Lot#51-** Chinese hard stone snuff bottle on stand. 4" t. Est. \$100-\$175.



**Lot#52-** Large Chinese hand blown bottle with reverse scenic painting of dogs. Missing knob on top. Ca. 1920. 4½" t x 5" w. Est. \$125-\$275.



**Lot # 53** - Chinese enameled snuff bottle. 3" t. Est. \$75-\$150.



**Lot # 54** - Chinese carved Cinnabar Lacquer snuff bottles with scenic carving on wood sides. Ca. 1910. 4" t. Est. \$150-\$275.



**Lot#55-** Two Chinese carved Cinnabar Lacquer snuff bottles. Ca. 1910. 3" t. Est. \$150-\$275.



**Lot # 56** - Chinese enameled snuff bottle. Ca. 1910. Est. \$75-\$150.



**Lot#57-** Three blue and white Chinese snuff bottles. Ca. 1920. 3" t. Est. \$150-\$275.



**Lot #58** - Chinese Jade snuff bottle. Ca. 1910. 3" t. Est \$100-\$175.



**Lot # 59** - Chinese lacquered snuff bottle. Ca. 1910. Est. \$100-\$175.



**Lot # 60** - Chinese hard stone carved snuff bottle. Ca. 1910. 3½" t. Est. \$75-\$150.





**Lot #61** - Three Chinese snuff bottles 2½" to 3" t. Est. \$100-\$175.



**Lot#62** - Four Chinese hard stone snuff bottles. 2" to 4". Est. \$125-\$250.



**Lot # 63** - Two Cloisonné snuff bottles on stands. 3½" t. Est. \$100-\$175.



**Lot #64** - Chinese decorated snuff bottle on wood stand. 3½" t. Est. \$50-\$100.



**Lot#65**-Three Chinese bone carved snuff bottles. 4" t. Est. \$75-\$100.



**Lot#66** - Chinese Cloisonné snuff bottle. 3" t. Est. \$50-\$100.



**Lot#67**- Three Chinese hard stone snuff bottles. Est. \$50-\$150.



**Lot#68** - Chinese snuff bottle on stand. 3½" t. Est. \$50-\$150.



**Lot#69** - Three Chinese snuff bottles. 2½" to 3" t. Est. \$100-\$175.



**Lot#70** - Four Chinese carved snuff bottles. Est. \$150-\$300.



**Lot # 71** - Two antique Ivory and bone covered jars. Ca. 1910. 2½"t & 4" t. Est. \$100-\$175.



**Lot# 72** - Two Chinese metal pieces, box and bottle, signed on bottom. 2" t. Est. \$50-\$100.





**Lot#73-** Two Chinese snuff bottles. 3" t.  
Est. \$50-\$100.



**Lot # 74** - Chinese cherry amber Buddha. 7" t.  
Est. \$100 -\$275.



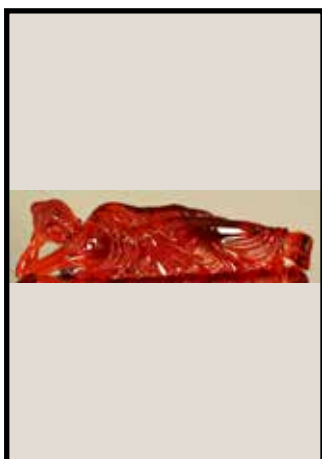
**Lot # 75** - Chinese cherry amber statue. 11" t.  
Est. \$125-\$275.



**Lot # 76** - Chinese cherry amber bird on tree. 12" t.  
Est. \$75-\$150.



**Lot # 77** - Chinese cherry amber statue of man on stand. 10" t. Est. \$75-\$150.



**Lot # 78** - Chinese cherry amber reclining lady. 11" L.  
Est. \$100-\$175.



**Lot # 79** - Two cherry amber pieces. 6" t.  
Est. \$75-\$150.



**Lot # 80** - Two Chinese cherry amber figures. Statue of man and ram. 5" t.  
Est. \$50-\$100.



**Lot # 81** - Chinese cherry amber elephant. 3" t x 4" L.  
Est. \$50-\$100.



**Lot # 82** - Antique Chinese Ivory statue of a woman. Ca. 1900. 13" t.  
Est. \$400-\$650.



**Lot # 83** - Antique Chinese Ivory statue of a man holding flowers. Ca. 1900. 13" t. Est. \$400-650.



**Lot # 84** - Antique Chinese Ivory statue of a religious figure. Ca. 1910. 11" t.  
Est. \$275-\$550.



**Lot # 85** - Antique Chinese Ivory statue of woman.  
Ca. 1910. 13" t.  
Est. \$375-\$550.



**Lot # 86** - Antique Chinese Ivory statue of woman.  
Ca. 1900. 13" t. Est.\$500-\$800.



**Lot # 87** - Antique Chinese Ivory statue of man.  
Ca. 1900. 14" t.  
Est. \$575-\$800.



**Lot # 88** - Antique Chinese Ivory Statue of woman.  
Ca. 1910. 8" t. Est. 375-\$550.



**Lot # 89** - Antique Chinese Ivory statue of man.  
Ca. 1900. 14" t.  
Est. \$550-\$800.



**Lot # 90** - Antique Chinese Ivory ship in the form of a dragon. Ca. 1900. 16" t x 14" L. Est. \$800-\$1200.



**Lot # 91** - Antique Chinese Ivory statue of a man with a sword. Ca. 1910. 13" t. Est. \$500-750.



**Lot# 92** - Antique Chinese Ivory statue of man.  
Ca. 1900. 17" t.  
Est. \$1200-\$1800.



**Lot# 93** - Antique Chinese Ivory statue of a woman holding a flute. 17" t.  
Est. \$1200-\$1800.



**Lot # 94** - Antique Chinese Ivory figural group setting.  
Ca. 1910. 16" t x 28" L.  
Est. \$1800-\$2400.



**Lot#95**-Pair of Antique Chinese Ivory Elephants.  
Ca. 1900. 2" t.  
Est. \$100-\$175.



**Lot#96**-Seven Antique Chinese Ivory figures on wood stand. Ca. 1920. 12" L x 6"t.  
Est. \$175-\$350.





**Lot # 97** - Antique Chinese Ivory mystic ball and stand. Ca. 1910. 6" t. Est. \$125-\$275.



**Lot # 98** - Two antique Chinese carved Ivory figures on wood stand. Ca. 1910. 4" t. Est. \$175-\$250.



**Lot # 99** - Two antique Chinese carved figures on stand. Ca. 1910. 4" t. Est. \$100-\$175.



**Lot # 100** - Antique Chinese carved Ivory figure on stand. Ca. 1900. 4" t. Est. \$100-\$175.



**Lot # 101** - Antique Chinese carved Ivory figure on elephant. Ca. 1900. 4" t. Est. \$125-\$200.



**Lot # 102** - Two antique Chinese carved Ivory figures of a man and woman holding fans. Ca. 1940. 3½" x 4½". Est. \$125-\$250.



**Lot # 103** - Two antique Chinese carved Ivory figures of man and woman on elephants. Ca. 1918. 3½" t. Est. \$175-\$250.



**Lot # 104** - Antique Chinese carved Ivory figure of man on water buffalo. Ca. 1910. Est. \$75-\$150.



**Lot # 105** - Antique Chinese Ivory group carving on wood stand. Ca. 1910. 10" t x 6" w. Est. \$400- \$650.



**Lot #106** - Antique Chinese Ivory group carving on wood stand. Ca. 1910. 9½" t x 6" w. Est. \$400-\$650.



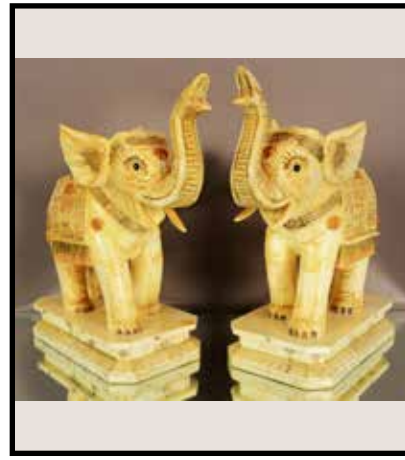
**Lot #107** - Antique Chinese Ivory carving of a vase. Ca. 1910. 7" t. Est. \$200-\$350.



**Lot #108** - Antique Chinese Ivory figure of man and chicken. Ca. 1910. 3" t x 3" w. Est. 200-\$350.



**Lot # 109** - Two antique Chinese Ivory figures mounted on lamp base. Ca. 1910. 10" t. Est. \$300-\$475.



**Lot # 110** - Two Chinese carved elephants. Ca. 1910. 16" t x 12" w. Est \$225-\$500.



**Lot # 111** - Vienna R.A. Regulator, porcelain dial, eight day movement, high grade, time & strike, Signed. Ca. 1875. 28" t. Est. \$450-\$750.



**Lot # 112** - Austrian R.A. Regulator, walnut case, eight day movement, good carving, porcelain dial, time & strike. Ca. 1875. Est. \$450-\$750.



**Lot #113** - Linzkirch German open well, walnut wall clock, eight day movement, signed Linzkirch. Ca. 1890. 35" t. Est. \$650-\$850.



**Lot # 114** - Austrian miniature R.A. Regulator, walnut case, high grade, eight day movement, time & strike, porcelain dial, Ca. 1875. 25" t. Est. \$675-\$900.

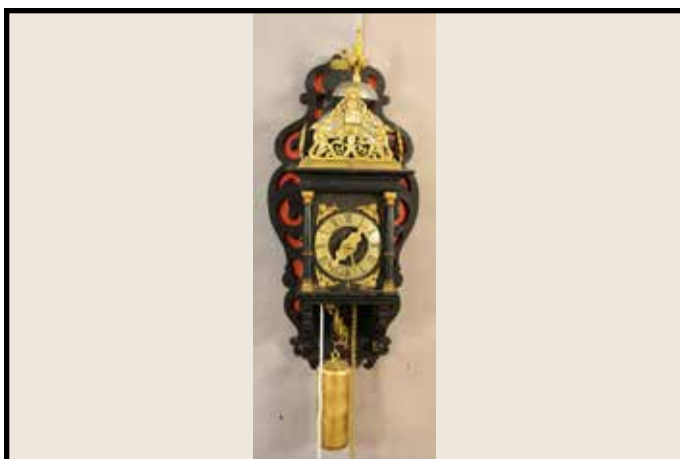




**Lot # 115** - German eight day oak, open well, wall clock, fancy pendulum, brass dial, possible Linzkirch movement, numbered. Ca. 1890. 36" t. Est. \$375-\$550.



**Lot # 116** - Rare early French miniature Rosewood wall clock, French silk thread suspension, 8 day movement, fancy brass dial, bell strike, Ca. 1850. 21" t. Est. \$650-\$900.



**Lot # 117** - Early Dutch repeater Zaanse wall clock. Late 1600's, time, strike, and repeat (hour and half hour). Single weight movement with alarm. Ca. 1690. 28" t. Est. \$800-\$1200.



**Lot # 118** - Dutch hanging repeater wall clock, brass dial, early time & strike, cherry and mahogany case, 2 weight movement. Ca. 1800. Est. \$1200-\$1600.



**Lot # 119** - French Louis XIV marble and cloisonné, 3 piece clock set with cloisonné dial, decorated with birds and flowers, time & bell strike, with two matching side compotes. Signed Japy Freres movement. Ca. 1875. Clock 13" t x 10" w. 10" compotes. Est. \$800-\$1200.



**Lot # 120** - "Le Coultre" Atmos mantel clock, 15 jewel Swiss made. 9" t x 8" w x 7" d. Est. \$600-\$900.



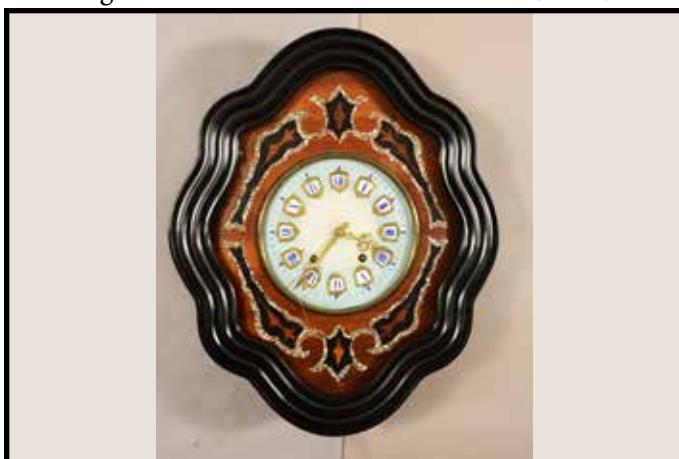
**Lot # 121** - American crystal regulator, Louis XV style. Gilt case, beveled glass on all sides, porcelain dial, open escapement. Ca. 1890. 14" t. Est. \$275-\$400.



**Lot # 121a**- French crystal regulator, bronze dial, time & strike, fancy decorated case on top & bottom, beveled glass on all sides, retailer J.E. Caldwell & Co. Philadelphia, works signed L. Marti France. 11" x 7" w. Est. \$350-\$600.



**Lot # 121b**- Ansonia figural statue mantel clock, 2 girls holding a bird & flowers, open escapement, time & strike, works signed Ansonia Clock Co., 34" t. Est. \$800-\$1200.



**Lot # 122** - French "Bakers" wall clock, porcelain dial with roman numerals, mother of pearl decorated face. Ca. 1890. 24" t x 10" w. Est. \$250-\$400.



**Lot # 123** - French art nouveau style novelty clock with jewelry box in base. New Haven Clock Co. Ca. 1910. 11" t x 8" w. Est. \$125-\$200.



**Lot # 124** - French Louis XV style giltwood novelty wall clock, carved wood with ribbon on top. Ca. 1900. 11" t. Est. \$75-\$150.





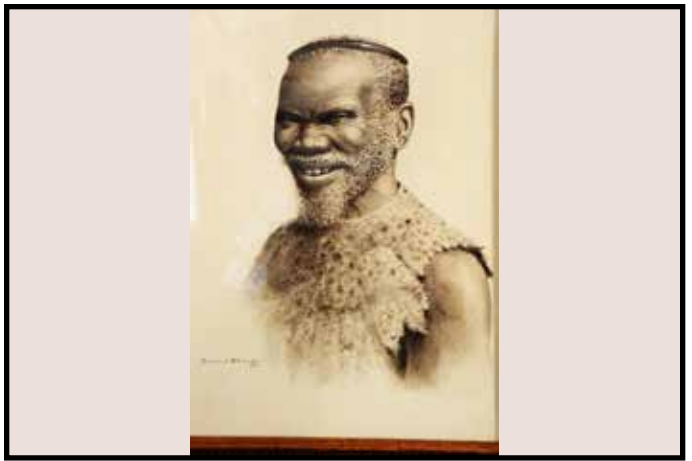
**Lot #125** - German 400 day anniversary clock, glass dome. Ca. 1960. Est. \$100-\$175.



**Lot #126** - Gorham trophy mug, sterling silver & leather. Portland Hunt Club Horse Show 1907. 7" t. Ca. 1907. Est. \$175-\$350.



**Lot # 127**- Black folk art oil on board. Southern cotton field scene. Artist signed B. Cummings. Ca. 1968. 18" x 24" Est. \$100-\$175.



**Lot # 128** - Zulu portrait water color by Gerard Bhengu. Ca. 1961. 13"x 9½". Est. \$100-\$175.



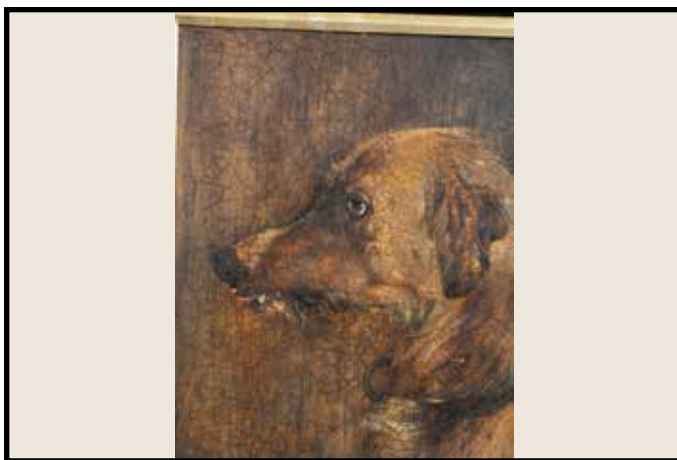
**Lot #129** - Portrait of a woman oil on canvas. Signed lower right. By E. Frattini. Ca. 1900. 10"x8". Est. \$200-\$375.



**Lot #130** - Portrait of a man, oil on canvas, signed lower left. By E. Frattini. Ca. 1900. 10"x 8". Est. \$200-\$375.



**Lot #131** - Mountain scape ink drawing on caribou skin. Artist signed, Ahqupuk. Ca 1960. 10"x 8". Est. \$100-\$175.



**Lot #132** -Hound portrait of dog, oil on board. Artist unknown. Ca. 1900. 10"x 8". Est. \$100-\$175.



**Lot #133** - "Apple River Island" oil on board Noel Doggett, mile 545 Mississippi river. Framed. Ca. 1960. 8"x10". Est. \$125-\$350.



**Lot #134** - Rural cabin scene oil on canvas, artist signed lower left Furlong. Framed. 24" x 18" Est. \$100-\$175.



**Lot #135** -Sea scape oil on canvas. Freyberg. Framed. Ca. 1960. 36" x 24". Est. \$150-\$275.



**Lot #136** - "Autumn Pool" Mountain scape oil on board, Dave Stirling. Signed lower right, Stirling. Ca. 1940. 30" x 22" Framed. Est. \$400-700.



# ARTwork



**Lot #137**- "Colorado Autumn" oil on board, signed lower right Stirling. Ca. 1953. 24" x 20" Framed. Est. \$400-\$700.



**Lot #138** - Mountain scape oil on canvas, artist signed, lower right, Ruth Lieberg. 36" x 24" Framed. Est. \$200-\$350.



**Lot #139** - "Autumn Afternoon" oil on board, David Stirling, artist signed lower left. Ca. 1952. 13"x 18" framed. Est. \$350-\$675.



**Lot #140** - Autumn scene, oil on canvas "October". Artist signed lower right Fred Q. Hartsook. Ca. 1932. 24" x 20" framed. Est. \$250-\$450.



## Landscape & Portrait



**Lot #141** - Mountain scape oil on board. Artist signed lower left F. Oliner. 33" x 27" framed. Est. \$175-\$350.



**Lot #142** - Folk art painting oil on board. Artist signed lower right Al Bargmann. Ca. 1960. 22" x 28". Est. \$100-\$175.



**Lot #143** -Art Deco portrait of a lady lithograph by Steven Bailey. Est. \$75-\$150.



**Lot #144** - Autumn mountain scape oil on canvas by Craig Johnson, artist signed lower right. Ca. 1960. 28" x 20". Est. \$100-\$175.





**Lot #145** - Chinese jade carving of a ship. Ca. 1920. 17" x 15". Est. \$300-\$600.



**Lot #146** - Chinese jade carving. Ca. 1920. 12"t x 19"w. Est. \$400-\$750.



**Lot #147** - Chinese jade carving of fish. 21"t x 15"w. Est. \$500-\$750.



**Lot #148** - Chinese decorated lacquer box with scenic headstone carving on lid. Ca. 1920. 17"w x 8"t x 17"d. Est. \$350-\$650.



**Lot #149** - Chinese bronze vase. 15" t. Est. \$100-\$275.



**Lot #150** - Antique Chinese decorated lacquer sewing box with Ivory sewing accessories. Ca. 1910. 6 1/2"t x 10"w. Est. \$400-\$750.



**Lot #151** - Chinese bronze sensor with foo dog on lid. Ca. 1920. 8"t x 9"w. Est. \$250-\$400.



**Lot #152** - Bronze statue of elephant and rider on marble base. 26"t x 17"L. Est. \$450-\$700.



**Lot #153** - Pair of Chinese foo dog carved marble book ends. 7"t x 6"w. Est. \$75-\$120.



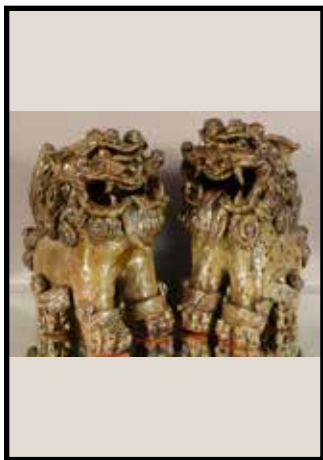
**Lot #154** - Pair of Chinese marble book ends. 6"t. Est. \$50-\$100.



**Lot #155** - Pair of Chinese marble statues. 8"t. Est. \$100-\$175.



**Lot #156** - Pair of Chinese porcelain foo dogs. 10"t. Est. \$75-\$150. Est. \$225-\$350.



**Lot #157** - Pair of Chinese terra cotta foo dogs. 12"t. Est. \$200-\$325.



**Lot #158** - Pair of Chinese marble foo dogs. 25"t x 14"L. Est. \$800-\$1200.



**Lot #159** -Chinese 20th Century water color of mother and child on rice paper. Ca.1910. 23" x 41". Est. \$600-\$900.



**Lot #160** -Chinese print of mother and children. Ca. 1910. 18" x 24" Est. \$125-\$250.



**Lot #161** -Chinese religious figure, water color painting on rice paper, 20th century. Ca. 1910. 10" x 25". Est. \$350-\$600.



**Lot #162** -Chinese religious figure water color on rice paper, 20th century. Ca. 1910. Est. \$350-\$600.



**Lot #163** -20th Century Chinese water color painting of religious figure. Ca. 1920. 29" x 20". Est. \$600-\$950.



**Lot #164** - 20th Century Chinese water color painting of religious figure. Ca. 1920. 29" x 20". Est. \$600-\$950.



**Lot #165** - Chinese Ancestor painting of two religious figures. Ca. 1900. 35"x 23". Est. \$400-\$750.



**Lot #166** -Chinese painting on board of two women. 20th century. Signature illegible. 34" x 16" framed. Est. \$175-\$300.



**Lot #167** - Chinese painting on board of two women. 20th century, signed. 34" x 16". Est. \$175-\$300.



**Lot #168** -20th Century Chinese religious painting on silk. 33" x 19" framed. Est. \$400-\$650.





**Lot #169** - 20th Century Chinese religious painting on silk. 33" x 19" framed. Est. \$400-\$650.



**Lot #170** - Chinese 20th Century oil painting of religious figure on board. 18" x 12" framed. Est. \$150-\$300.



**Lot #171** - Chinese 20th Century oil painting of religious figure on board. 18" x 18". Est. \$150-\$200.



**Lot #172** - 20th Century Chinese oil on paper of a religious figure. 14" x 20" framed. Est. \$150-\$300.



**Lot #173** - Chinese character figures, framed, hand sewn, under glass. Ca. 1900. 15" x 21". Est. \$150-\$350.



**Lot #174** - Chinese 20th Century water color on paper, artist signed, 7" x 10" framed. Est. \$100-\$250.



**Lot #175** -Chinese water color of men fishing on paper, 20th century, artist signed, 7" x 10". Est. \$100-\$250.



**Lot #176** -Chinese ceremonial scene water color on paper, 20th century, artist signed, 7" x 10". Est. \$100-\$250.



**Lot #177** - Chinese 20th Century water color on paper of man at a water fall, artist signed, 7" x 10". Est. \$100-\$250.



**Lot #178** -Chinese scenic painting on porcelain, 20th century, 50" x 17" framed. Est. \$200-\$375.



**Lot #179** -Early lithograph of a Chinese woman, published May 4, 1799, London. Mounted in oval frame. 12" x 13". Est. \$100-\$200.



**Lot #180** -Early Chinese painting of a figure, hand colored. Published May 4, 1799. 12" x 13" in oval frame. Est. \$100-200.





**Lot #181** -Early ceremonial painting on glass, mounted in rosewood stand, ca. 1800's. 25" x 17". Est. \$1500-\$3500.



**Lot #182** - Scenic jade carving under glass of a house in the mountain, 20th century, 24" x 35". Est. \$375-\$600.



**Lot #183** - Two carved jade panels, 20th century. 31" x 14". Est. \$175-\$300.



**Lot #184** - Two jade scenic carved panels, 20th century, 36" x 12". Est. \$175-\$300.



**Lot #185** -Two jade scenic carved panels, 20th century. 36" x 12". Est. \$175-\$300.



**Lot #186** -Chinese scenic scroll on silk, hand painted, signed, 20th century, 35" x 24". Est. \$175-\$400.



**Lot #187**- Chinese painting of religious figure on silk, hand painted, 20th century, 35" x 26". Est. \$174-\$400.



**Lot #188** - Chinese painting on porcelain, 20th century, 23" x 14". Est. \$100-\$275.



**Lot #189** -American renaissance style walnut two door book-case, wide burl walnut panels, carved corners, two drawers with hand cut dove tail in base. Raised burl walnut on sides. Original adjustable shelves. Ca. 1875. 57"t x 17"d x 57"w. Est.\$800-\$1200.



**Lot #190** -Dental cabinet - American Cabinet Co. Mahogany, 22 drawers, 3 drawers with etched glass. Ca. 1920. 63"t x 13"d x 40"w. Est. \$600-\$900.

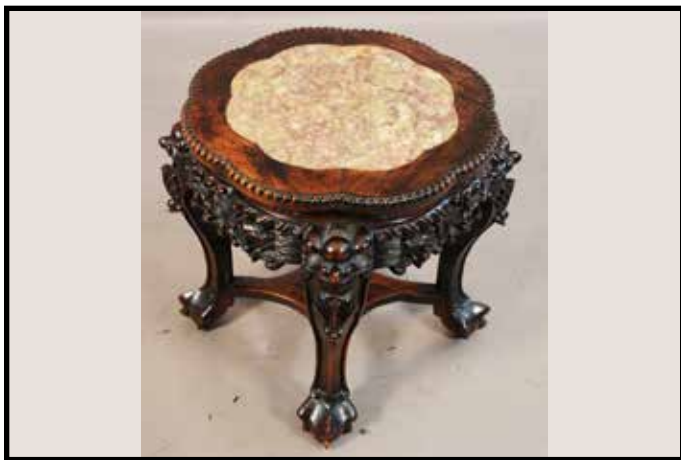


**Lot #191** -Chinese child s wooden chair, early 20th Century with low table. Ca. 1920. 26"t x 21"d x 20"w. Est. \$200-\$375.



**Lot #192** - Chinese rosewood marble side table with marble insert, carved edges, pierced carved skirt, small piece missing, dragon carved on center column with 3 floral legs. Ca. 1890. 30"t x 17"d. Est. \$400-\$750





**Lot #193** - Chinese rosewood marble top low table with marble insert on shaped top carved skirt and stretcher with four claw feet. Ca. 1890. 18”t x 17”d. Est. \$325-\$550.



**Lot #194** - Chinese rosewood arm chair with mother-of-pearl inlay in back and on arms of chair. Ca. 1890. 39”t x 19”d x 25”w. Est. \$400-700.



**Lot #195** -Chinese rosewood parlor chair with carved back and skirt. Ca. 1890.35”t x 17”d x 21”w. Est. \$250-\$375.



**Lot #196** - Chinese rosewood arm chair with floral carved back and arms. Ca. 1890. 38”t x 19”d x 26”w. Est. \$275-400.



**Lot # 197**-Chinese nest of tables. Rosewood with scenic carved tops on all four tables. Ca. 1900. 26”t x 14”d x 20”w. Est. \$325-\$600.



**Lot #198** - French Louis XIV style vitrine with bronze galley on top. Single door with bronze trim & flamed panel on 4 bronze mounted fee. Ca. 1920. 52”t x 12”d x 22”w. Est. \$350-\$600.



**Lot #199** - Antique Chinese cabinet with scenic carved Ivory panels, 5 drawers, 3 doors, Ca. 1900. 83”t x 17”d x 47”w. Est. - \$1100-\$1600.



**Lot #200** - Chinese rosewood low table with jade & hard-stone scenic design in top. Floral carved skirt with curved ends. Ca. 1920. 16”t x 19”d x 33”w. Est. \$400-\$650.



**Lot #201** - Chinese 18 drawer low chest, elmwood with brass pulls. 20th century, 23”t x 10”d x 25”w. Est. \$175-\$250.



**Lot #202** - Chinese rosewood 9 piece dining room set with 6 chairs, 2 arm chairs and extension table with 2 leavers. 20th century. Table 42” x 60”, 18” leavers, arm chairs 38”t. Est. \$1600-\$2800.



**Lot #203** - 20th century Chinese rosewood serving cabinet, classic style, 2 drawers over 2 doors. 52”t x 19”d x 52”w. Est. \$250-\$375.



**Lot #204** - Chinese rosewood side cabinet, carved front, paneled sides, 1 drawer, 2 doors, 20th century. 22”t x 22”w x 22”L. Est. \$225-\$400.





**Lot #205** - Chinese rosewood console table, classic style with shaped top and carved legs. 20th century. 33”t x 15”d x 49”w. Est. \$175-\$300.



**Lot #206** - Chinese rosewood low table, floral carved skirt with carved legs. 20th century. 13”t x 18”d x 37”w. Est. \$100-\$175.



**Lot #207** - Antique Chinese side cabinet with carved front and interior. Ca. 1910. 29”t x 15”d x 20”w. Est. \$150-\$275.



**Lot #208** - 20th century Chinese elmwood chest with burled elm panels & brass decoration. 23”t x 14”d x 22”w. Est. \$125-\$250.



**Lot #209** - Chinese black lacquered display cabinet, six sided with gilt decoration, 20th century. 71”t x 22”w. Est. \$375-\$600.



**Lot #210** - Chinese style laquered writing desk, triple leather, raised enameled scenic design on all sides, 8 drawers, 20th century, 30”t x 28”d x 51”w. Est. \$325-\$600.



**Lot #211** - Chinese 20th century scenic folding screen with carved jade & hard-stone panels. 72" x 72"  
Est. \$400-\$650.



**Lot #212** - Chinese rosewood drop front desk with bookcase top, classic Chinese style, 20th century, 2 doors over 4 drawers with drop front writing desk.  
84"t x 22"d x 42"w. Est. \$650-\$900.



**Lot #213** - Scenic carved Chinese trunk, camphor wood, dovetail construction, 20th century.  
16"t x 14"d x 29"w. Est. \$125-\$250.



**Lot #214** - Scenic carved Chinese trunk, camphor wood lined, 20th century, 23"t x 20"d x 41"w. Est. \$200-\$375.



**Lot #215** - Chinese hand painted fire screen, scenic design. 34"t x 37"w. Est. \$100-\$175.



**Lot #216** - 20th century Chinese, 4 panel table screen with floral decorated hard stone carved panels.  
18"t x 24"w. Est. \$125-\$250.





**Lot #217** - Rosewood jeweled chest, Chinese style, 20th century, lift top with 2 drawers. 10"t x 10"d x 15"w. Est. \$100-\$175.



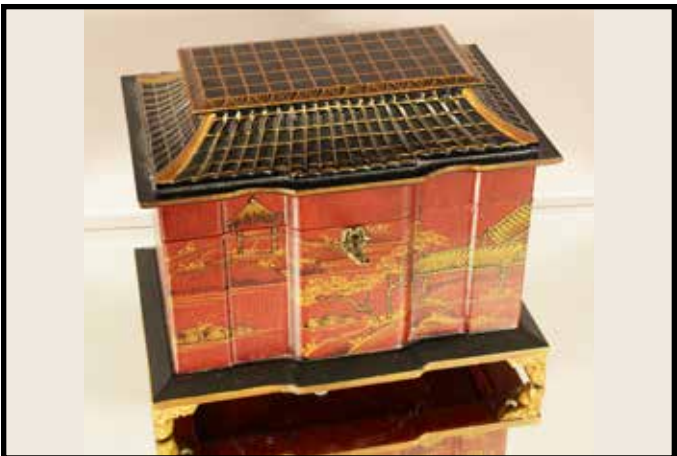
**Lot #218** - Chinese ashwood jewelry chest with brass decoration, 2 drawers, 2 doors, 20th century. 15"t x 21"w x 10"d. Est. \$100-\$175.



**Lot #219** - Chinese jewelry chest with mother-of-pearl inlay & music box on inside, 20th century. 16"t x 6"d x 15"w. Est. \$175-\$300.



**Lot #220** - 20th century jewelry chest, oak with lift top, 1 drawer. 7"t x 11"w. Est. \$75-\$150.



**Lot #221** - Chinese jewelry chest, lift top with decorative sides, 20th century, 10"t x 12"w. Est. \$75-\$150.



**Lot #222** - Chinese jewelry chest, lift top with brass painted sides, 2 drawers, 20th century, 8"t x 12"w. Est. \$75-\$100.



**Lot #223**- Chinese red lacquered decorated box, lift top, 20th century, 9" x 17". Est. \$50-\$90.



**Lot #224** - Chinese red lacquered decorated box, lift top, 20th century, 6" x 13". Est. \$50-\$90.



**Lot #225** - Chinese carved wooden jewelry box, lift top with scenic panels on all sides, 20th century. 8" x 13". Est. \$75-\$150.



**Lot #226**- Set of 3 stacking, decorated, Chinese boxes, 20th century, 9", 8", & 7" tall. Est. \$75-\$150.



**Lot #227**- Chinese style rosewood hanging wall cabinet, 20th century, 25"t x 18"w. Est. \$50-\$90.



**Lot #228**- Chinese style rosewood hanging wall cabinet, 20th century, 32"t x 20"w. Est. \$50-\$90.





**Lot #229**- Champleve enameled bronze Chinese umbrella & cane holder, 20th century, 24"t x 9"d. Est. \$275-\$600.



**Lot #230** - Champleve enameled bronze Chinese Jardinière & pedestal, 20th century, 34" x 12". Est. \$600-\$900.



**Lot #231** - Champleve enameled bronze floor lamp, Chinese, 20th century, electrified, Ca. 1920, 68"t. Est. \$300-\$550.



**Lot # 232** - Champleve enameled bronze floor lamp, 20th century, Chinese, electrified. Ca. 1920. 72"t. Est. \$325-600.



**Lot #233**- Bronze Chinese style floor lamp, 20th century, electrified, 59"t. Est. \$150-\$275.



**Lot #234**- 1920's Touchiere floor lamp, American, electrified, Ca. 1920. 62"t. Est. \$150-\$275.



**Lot #235**- 1920's Touchiere floor lamp, American, electrified, swirl shade, Ca. 1920, 62"t. Est. \$150-\$275.



**Lot #236** - Art Deco style floor lamp, original shade, electrified, Ca. 1920. Est. \$200-\$375.



**Lot #237** - 1920's floor lamp with brass base, electrified, Ca. 1920, 58"t. Est. \$75-\$150.



**Lot #238** - Chinese style rosewood nest of tables, 20th Century, 28"t x 14"d x 19"w. Est. \$125-\$200.



**Lot #239**- Pair of Chinese porcelain lamps, scenic design, hand painted, 20th century, 29"t. Est. \$125-\$275.



**Lot #240**- Antique Chinese blue on grey water jug with dragon design surrounding jugs, Ca. 1890, 12" x 11". Est. \$175-\$300.



**Lot #241** - Antique Chinese incense burner, silver overlay on heavy jade base, 20th century, 5 ½"t. Est. \$325-\$700.



**Lot #242** - Chinese embossed silver covered jar, 20th century, 3 ½"t x 3"d. Est. \$175-\$300.



**Lot #243** - Antique Chinese blue on grey pot, Ca. 1880, 6"t x 8"w. Est. \$225-\$500.



**Lot #244** - Early Chinese blue on grey pot & stand, Ca. 1850, 6"t. Est. \$275-\$400.



**Lot #245** - 3 Chinese covered jars, varies ages & styles, 19th century, 2 ½"t x 3" t. Est. \$200-\$450.



**Lot #246** - Chinese blue on grey jar, 19th century, 4"t. Est. \$100-\$250.



**Lot #247** - 3 Chinese open pots, 2 blue on grey, 1 black on grey, 19th century, 2" to 4"t. Est. \$100-\$275.



**Lot #248** - Indonesian covered jar, brown decoration, 19th century, 3"t. Est. \$150-\$275.



**Lot #249** - Chinese blue on grey covered jar, 20th Century, 10"t x 9"d. Est. \$175-\$325.



**Lot #250** - Chinese iron tea pot, 20th century, 10"t. Est. \$75-\$150.



**Lot #251** - Chinese bronze sensor with wood & jade lid, 3 footed, 20th century, 8"t. Est. \$150-\$275.



**Lot #252** - Chinese Cloisonné tea pot, early 20th century, 5"t. Est. \$175-\$250.





**Lot #253-** Antique Chinese enameled tea pot, hand decorated, 19th century, 6"t. Est. \$250-\$375.



**Lot #254-** 3 piece Kutani tea set, 20th century, pot 5"t, creamer 4"t, sugar 3 1/2"t. Est. \$100-\$175.



**Lot #255** - 4 Kutani pieces, 2 bowls 7"d & 4"d, pitcher 4"t, covered jar 5"t., 20th century. Est. \$100-\$175.



**Lot #256-** Chinese palace vase with serpent decoration on side, 20th, 37"t x 18"d. \$150-\$275.



**Lot #257-** 36" Japanese scenic raised enameled decorated palace vase, 20th century, 36"t. Est. \$150-\$275.



**Lot #258-** Large rose medallion palace vase, 30th Century, 3"t. Est. \$275-\$400.



**Lot #259**- 2 rose medallion vases, 20th century, 24"  
Est. \$225-\$400.



**Lot #260** - Chinese porcelain garden stool, 20th century,  
19". Est. \$75-\$150.



**Lot #261** - Japanese blue scenic decorated pot, 20th  
Century, 14". Est. \$50-\$90.



**Lot #262** - Chinese scenic decorated with peacocks,  
umbrella holder, 20th century, 19". Est. \$75-\$150.



**Lot #263**- Chinese rose medallion style fish bowl, scenic  
decoration, 20th century, 12"t x 15"d. Est. \$50-\$90.



**Lot #264**-Chinese rose medallion style fish bowl, scenic  
decoration, 20th century, 12"t x 15"d. Est. \$50-\$90.





**Lot #265**- Chinese decorated fish bowl, 20th century, 10"t x 12"d. Est. \$40-\$75.



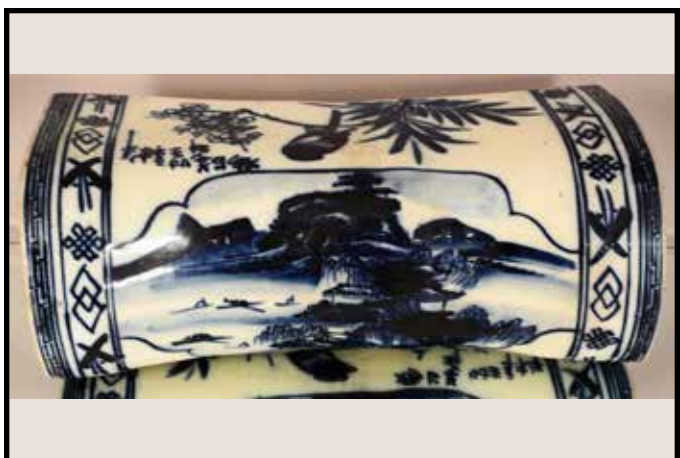
**Lot #266** - Chinese decorated fish bowl, 20th century, 10"t x 13"d. Est. \$40-\$75.



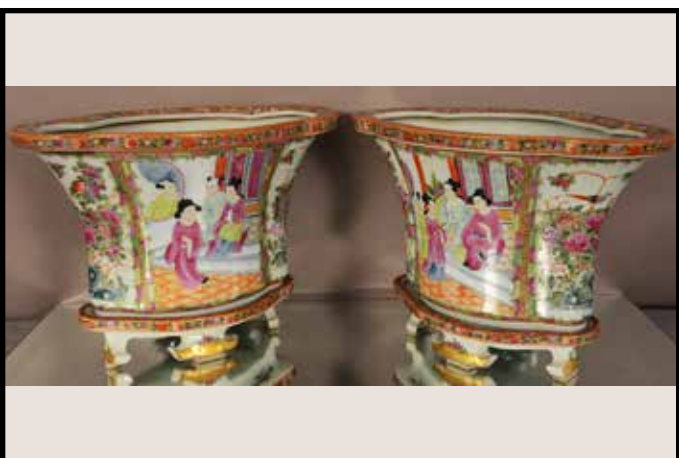
**Lot #267** - Chinese blue on grey decorated pot, 20th Century, 10" x 13". Est. \$50-\$90.



**Lot #268** - Chinese blue on grey decorated covered jar, 20th century, 13"t. Est. \$100-\$175.



**Lot #269**- Chinese blue on grey decorated foot rest, 20th century, 24"w. Est. \$75-\$150.



**Lot #270**- Pair of rose medallion style Chinese porcelain Jardiniers on stands, 20th century, 10" x 14". Est. \$175-\$325.



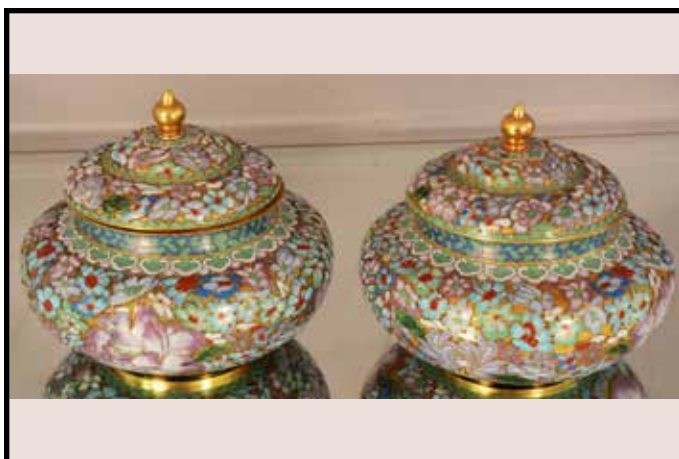
**Lot #271** - Chinese rose medallion style vase, 20th Century, 12"t x 11"d. Est. \$50-\$90.



**Lot #272** - 2 Chinese decorated porcelain vases, 20th century, 14"t x 8"t. Est. \$50-90.



**Lot #273** - Chinese blue on grey covered jar, 20th century, 9" x 5". Est. \$40-\$90.



**Lot #274** - Pair of Chinese cloisonné covered jars, 20th century, 5"t x 6"d. Est. \$100-\$275.



**Lot #275**- 3 Chinese rose medallion pieces, 20th century, 2 plates 10"d, 1 bowl 8". Est. \$100-\$175.



**Lot #276**- 4 Chinese rose medallion pieces, 20th century. Est. \$100-\$175.





**Lot #277** - Pair of cloisonné Chinese candle holders, 20th century, 11"t. Est. \$100-\$175.



**Lot #278** - Champleve bronze vase with 2 handles. 20th century, 12"t x 8"w. Est. \$100-\$200.



**Lot #279** - Pair of cloisonné Chinese vases decorated with birds and flowers, 20th century, 6"t. Est. \$125-\$275.



**Lot #280** - 3 Chinese cloisonné covered boxes, 20th century, 2"t & 3"t. Est. \$175-\$300.



**Lot #281** - 2 Chinese cloisonné covered jars, floral decoration, 20th century, 6"t. Est. \$125-\$275.



**Lot #282** - Cloisonné Chinese vase, floral design, 20th century, 6"t. Est. \$60-\$90.



**Lot #283** - Chinese cloisonné tea pot, 20th century, 7"t. Est. \$125-\$285.



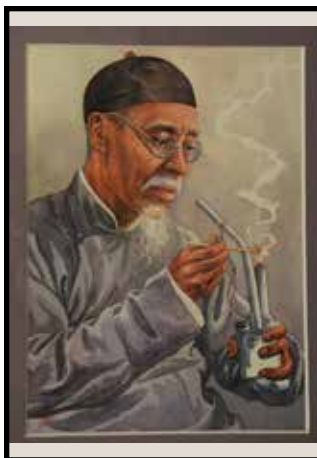
**Lot #284** - Chinese tea pot with carrier, cloisonné with dragon design, 20th century, 4"t. Est. \$125-\$275.



**Lot #285** - Chinese Cloisonné covered jar with floral design, 8"t. Est. \$75-\$150.



**Lot #286** - 2 antique Chinese opium pipes, cloisonné, enameled on all sides. Ca. 1900. 14"t & 20"t. Est. \$150-\$350.



**Lot #287** - Chinese picture of man with opium pipe, signed Kling, 20th century, 6" x 5". Est. \$25-\$60.



**Lot #288** - Chinese opium pipe, enameled, decorated, 20th century, 11"t. Est. \$75-\$150. Est. \$225-\$350.



**Lot #289**-2 Chinese opium pipes, 20th century, 9"t & 7"t. Est. \$90-\$180.



**Lot #290** - 2 Chinese metal tea pots with scenic panels on sides, foo dog lid, 20th century, 12"t. Est. \$100-\$275.



**Lot #291** - 3 enameled cloisonné Chinese pieces, floral decoration, 20th century, bowl 4", plate 4", covered box 3". Est. \$75-\$150.



**Lot #292** - Japanese decorated metal vase with birds, 20th century, artist signed, 10"t. Est. \$50-\$90.



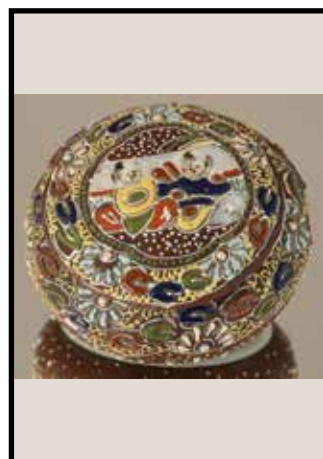
**Lot #293**- 2 Japanese metal pieces, 20th century, covered jar 6"t, vase 8"t. Est. \$75-\$150.



**Lot #294**- 2 Chinese brass pieces, 20th century, tea pot 6"t, decorated bowl 10"d. Est. \$50-\$90.



**Lot #295**- Satsuma jar with raised scenic enameled decoration, Ca. 1900, 7"t. Est. \$50-\$90.



**Lot #296** - Moriage raised enameled decorated covered jar with 2 children on top, Ca. 1900, 3"d. Est. \$60-\$100.



**Lot #297** - Cloisonné enameled decorated tea pot, scenic panels on sides, 20th century, 6"t. Est. \$75-\$150.



**Lot #298** -Japanese raised enameled cobalt blue decorated lemonade pitcher with children on sides, Ca. 1900, 10"t. Est. \$75-\$150.



**Lot #299**- Chinese scenic cobalt blue decorated charger, 20th century, 17"d framed. Est. \$175-\$300.



**Lot #300**- Chinese scenic cobalt blue decorated charger, 20th century, 17"d framed. Est. \$175-\$350.





**Lot #301** - 3 rose medallion plates, 20th century, framed. Est. \$75-\$150.



**Lot #302** - 2 Chinese decorated wood panels, 20th Century, 50"t x 30"w each. Est. \$150-\$300.



**Lot #303** - Chinese embroidered silk & hand painted picture of birds, Ca. 1900, 44"t x 16". Est. \$250-\$400.



**Lot #304** - Early Chinese painting on silk of woman, Ca. 1860, 3 1/2" x 6" framed. Est. \$150-\$300.



**Lot #305**- Early Chinese painting of man carrying wood on silk, Ca. 1860, 3 1/2" x 6". Est. \$150-\$300.



**Lot #306**- Chinese painting on silk of a house, original frame, Ca. 1900, 14" x 13". Est. \$175-\$300.



**Lot #307**- Antique Chinese knife, Ivory handle & sheaths, Ca. 1900. Est. \$275-\$400.



**Lot #308** - Antique Chinese bronze plaque, Ca. 1900, 7"d. Est. \$75-\$150.



**Lot #309** - 25" porcelain charger, hand painted, 20th century. Est. \$500-\$700.



**Lot #310** - 2 Chinese celadon vases, hand decorated, 20th century, 5"t. Est. \$100-\$275.



**Lot #311**- Celadon Chinese tea pot in the form of an elephant, 20th century, 8"t. Est. \$150-\$275.



**Lot #312**- Cloisonné plate, floral decoration, 20th century, 7"d. Est. \$50-\$125.



**Lot #313**- 6 piece Japanese porcelain berry bowl set, scenic hand painted design, 20th century, 10"d. Est. \$40-\$90.



**Lot #314** - Chinese antique mahjong game in rosewood case, 20th century, 7" x 10". Est. \$75-\$150.





**Lot #315** - Pair of Chinese wooden statues, man & woman carrying buckets, 20th century, 20"t. Est. \$75-\$150.



**Lot #316** - 4 Chinese men figures, 20th century, 4"t to 5"t. Est. \$100-\$175.



**Lot #317** - 2 Chinese porcelain figures, 20th century, 5"t. Est. \$50-\$90.



**Lot #318** - 19 pieces of Chinese blue porcelain, 20th century. Est. \$50-\$150.



**Lot #319** - Chinese tomb guard statue, 20th century, 47"t. Est. \$275-\$400.



**Lot #320** - Chinese tomb guard, 20th century, 36"t. Est. \$275-\$400.



**Lot #321** - 2 Chinese tomb guards, 20th century, 29"t x 23"t. Est. \$125-\$200.



**Lot #322** - Chinese tomb guard, 20th century, 22"t. Est. \$75-\$150.



**Lot #323** - 8 Chinese tomb guards, 20th century, 14" to 5". Est. \$75-\$150.



**Lot #324-** Pair of Chinese figural carved book ends, 20th century, 9"t. Est. \$75-\$150.



**Lot #325-** Japanese raised enameled vase, decorated with swans, 20th century, 9"t. Est. \$50-\$90.



**Lot #326 -** Pair of Chinese decorated vases, 20th century, 6"t. Est. \$50-\$175.



**Lot #327 -** Pair of Chinese decorated porcelain vases, scenic design, 20th century, 17"t. Est. \$90-\$150.



**Lot #328 -** Japanese raised enameled pitcher, floral design, 20th century, 9"t. Est. 75-\$150.



**Lot #329-** Chinese cast iron pot, 20th century, 10"t. Est. \$75-\$150.



**Lot #330-** Japanese raised enameled vase, bird & floral design, 20th century, 7"t. Est. \$50-\$90.





**Lot #331**- Japanese 6 piece, hand decorated, dresser set, ca. 1920's. Est. \$175-\$350.



**Lot #332** - Pair of Chinese style panels with hard stone panels, 20th century. Est. \$100-\$175.



**Lot #333**- Chinese rosewood stand with carved panel, 20th century. Est. \$75-\$150.



**Lot #334** - Chinese table screen, silk panel, 20th century, 20"t. Est. \$40-\$75.



**Lot #335**- Japanese enameled covered jar, raised enameled design, 20th century, 7"t. Est. \$40-\$75.



**Lot #336**- 35 pieces of canton blue dinner set, 20th century. Est. \$50-\$90.



**Lot #337** - 6 Meissen porcelain pieces, 20th century, Est. \$50-\$90.



**Lot #338** - Collection of jade fruit & flowers, 20th Century. Est. \$50-\$90.



**Lot #339** - Jade tree & fruit, 20th century. Est. \$50-90.



**Lot #340** - 2 Chinese porcelain figures, 20th century, 16"t & 10"t. Est. \$75-\$150..



**Lot #341** - Lhando figure of Japanese woman, 20th Century, 11"t. Est. \$90-\$140.



**Lot #342** - Lhando figure of Dutch woman, 20th century, 10"t. Est. \$80-\$120.





**Lot #343-** K.P.M. porcelain figure of a Chinese woman, 9"t. Est. \$90-\$140.



**Lot #344** - German Dresden statue of a woman in blue dress, ca. 1900, 7"t. Est. \$60-\$90.



**Lot #345** - Dresden figure of a woman in a pink dress, ca. 1900, 4"t. Est. \$90-\$140.



**Lot #346** -2 royal Doulton figures, the mask seller 8½"t, silk & ribbons 6"t, 20th century. Est. \$100-\$175.



**Lot #347** - 2 royal Doulton figures, the old balloon seller 7"t, the balloon man 7"t. Est. \$75-\$150.



**Lot #348**- Antique German porcelain doll, few flakes, ca. 1900. Est. \$75-\$150.



**Lot #349**- 6 pieces of Wedgwood Jasperware, 20th Century. Est. \$75-\$150.



**Lot #350** - Japanese woman with 2 buckets, occupied, marked Japan, 8"t, ca. 1948, Est. \$75-\$150.



**Lot #351** - School boys, Hummel figure, ca. 1950, West Germany, 7"t. Est. \$75-\$150.



**Lot #352** - Cross roads, Hummel figure, ca. 1955, 7". Est. \$75-\$150.



**Lot #353**- 2 girls, Hummel figure, Germany, 7". Est. \$50-\$90.



**Lot #354**- 3 Hummel figures, Germany, 6"t. Est. \$75-\$190.





**Lot #355**- 3 Hummel figures, West Germany, 6"t.  
Est. \$75-\$190.



**Lot #356** - 4 Hummel figures, Germany, 4"t & 3"t.  
Est. \$75-\$190.



**Lot #357** - 3 Hummel figures, 20th century, 6½"t.  
Est. \$90-\$200.



**Lot #358** - 5 Hummel figures, 20th century, 4"t.  
Est. \$90-\$150.



**Lot #359**- 4 Hummel figures, 20th century, 4"t.  
Est. \$90-\$150.



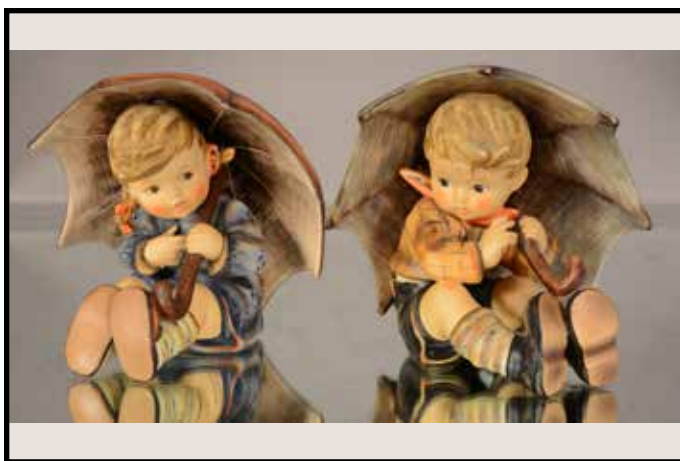
**Lot #360**- 3 Hummel figures, 20th century, 5"t.  
Est. \$90-\$225.



**Lot #361** - Hummel plaque & button, 20th century.  
Est. \$50-\$100.



**Lot #362** - Umbrella kids, West Germany, ca. 1979, 6½"t.  
Est. \$75-\$150.



**Lot #363** - Umbrella boy & girl, West Germany, ca. 1952, 5"t. Est. \$125-\$275.



**Lot #364** - Ride into Christmas, Hummel figure, ca. 1971, 6"t. Est. \$50-\$90.



**Lot #365**- 4 Hummel type figures, 20th century, 5"t & 4"t. Est. \$50-\$125.



**Lot #366**- 3 Hummel figures, 20th century, 5"t.  
Est. \$50-\$125.





**Lot #367** - 4 Hummel figures, 20th century, 4"t.  
Est. \$100-\$175.



**Lot #368** - 4 Hummel type figures, 20th century, 3"t.  
Est. \$40-\$90.



**Lot #369** - Hummel 16 piece nativity scene with stable, 20th century. Est. \$800-\$1200.



**Lot #370**- 130 pieces of amber Madrid depression glass dinner set, 16 place setting with serving pieces, ca. 1920.  
Est. \$800-\$1200



**Lot #371**- Antique Chinese wool carpet, ca. 1920's, 5'8" x 7'8". Est. \$250-\$400.



**Lot #372**- Maytag model 40 washing machine, Southern Cypress wood tub, hand powered, ca. 1918-1919, 44"t x 23"d x 30"w. Est. \$350-\$600.



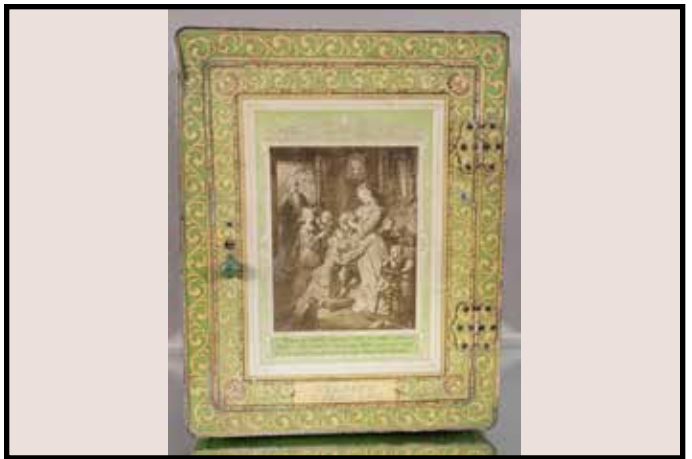
**Lot #373-** "The Boye Needles" sewing tin, ca. 1920. 16"d. Est. \$150-\$275.



**Lot #374** - "The Liverpool, China & India Tea Co." tea box, ca. 1900, 8" x 11". Est. \$150-\$275.



**Lot #375** - The Bittman Todd Grocer & Co. Tea Importer, tin box, ca. 1900, 16" x 16". Est. \$150-\$275.



**Lot #376** - Schepp's Bread Box, tin box, ca. 1900, 20" x 16". Est. \$125-\$250.



**Lot #377-** Tin tea box with different kitchen scenes on side, French, Dutch, Early American, Spanish, ca. 1900, 8"t x 11"w. Est.\$ 100-\$250.



**Lot #378-** Chinese tin, tea box, ca. 1900, 10" x 6"d. Est. \$75-\$150.





**Lot #379-** Jumbo peanuts, 10lb tin, Peanut Specialty Co., ca. 1910. Est. \$50-\$90.



**Lot #380-** Spice tin with 6 containers, ca. 1900, 4"t x 10". Est. \$50-\$90.



**Lot #381** - Thompson Malted Milk, 25lb, tin can, ca. 1920, 15"t. Est. \$40-\$75.



**Lot #382** - Hires R.J. Root Beer 1 gallon tub, Thompson Malted Milk 5 lbs tin, ca. 1920, 4"t. Est. \$50-\$90.



**Lot #383-** 2 Tobacco tins, Tiger Bright Sweet Chewing Tobacco 8"t, Union Leaded Cut Plug, ca. 1920, 4"t. Est. \$90-\$150.



**Lot #384-** 3 Tins: 2 Calumet Baking Powder 8" & 5" & Butter Wafers Denver, Colorado 7", ca. 1920. Est. \$50-\$90.



**Lot #385**- 2 Tins: Dunbar's Pitcher Syrup 6"t & Calumet Tin Paper Label 6"t, ca. 1900. Est. \$75-\$150.



**Lot #386** - Philadelphia Cream Cheese Box, wood, ca. 1900, 9"L. Est. \$25-\$60.



**Lot #387** - Maytag mixing can, ca. 1910, 8"t. Est. \$50-\$90.



**Lot #388** - 3 Chinese tea tins, Woo Long Tea , Tack Kee & Co., ca. 1920's, 5". Est. \$60-\$90.



**Lot #389**- 2 Chinese biscuit tins, ca. 1920, 7"w x 9"w. Est. \$40-\$90.

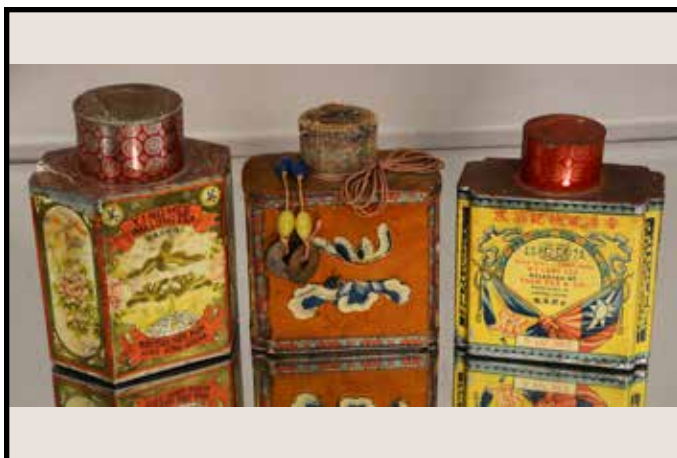


**Lot #390**- 3 Chinese pewter tea caddies, ca. 1910, 10"t & 6"t. Est. \$100-\$225.





**Lot #391** - Y & S Pure Calabria Licorice tin, 5lbs, ca. 1900, 8"t. Est. \$ 40-\$90.



**Lot #392** - 3 China tea tins, ca. 1900, 5"t. Est. \$70-\$120.



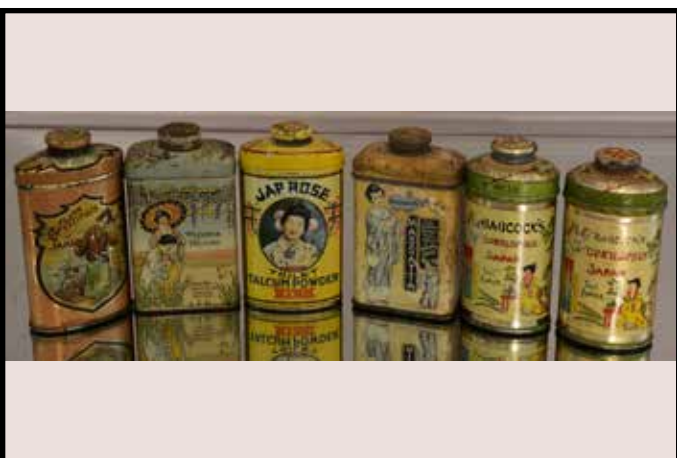
**Lot #393** - 3 tins, ca. 1920. 6"t & 2"t. Est. \$70-\$120.



**Lot #394**- 3 Chinese tea tins, ca. 1910, 3"t & 6"t. Est. \$40-\$90.



**Lot #395**- 4 Coffee tins, ca. 1920, 8"t. Est. \$40-\$90.



**Lot #396**- 6 Japanese powder tins, ca. 1920, 5"t. Est. \$40-\$90.



**Lot #397** - 5 Japanese powder tins, ca. 1920, 5"t. Est. \$40-\$90.



**Lot #398** - 6 powder tins, ca. 1920, 2"t. Est. \$35-\$60.



**Lot #399** - 4 Japanese soap tins & bars, ca. 1920, 3" & 1". Est. \$25-\$60.



**Lot #400** - Maytag oil can, ca. 1910, 5"t. Est. \$25-\$50.



**Lot #401** - Big Ben Tobacco & Pikes Peak Lard Tin, ca. 1922, 5"t. Est. \$25-\$50.



**Lot #402** - "Fun to Wash" washing powder box, never opened, ca. 1920. Est. \$40-\$90.





**Lot #403-** "Gin Seng" tin serving tray, ca. 1920, 13" x 10".  
Est. \$60-\$125.



**Lot #404** - "Elkhart Ice Cream" tray, ca. 1920, 15" x 10".  
Est. \$80-\$140.



**Lot #405** - "Nu Grape" serving tray, ca. 1930, 13" x 10½".  
Est. \$80-\$140.



**Lot #406-** "Orange Crush" serving tray, ca. 1930, 13" x 10".  
Est. \$50-\$100.



**Lot #407-** Land O' Lakes serving tray, a. 1950, 11" x 13".  
Est. \$25-\$50.



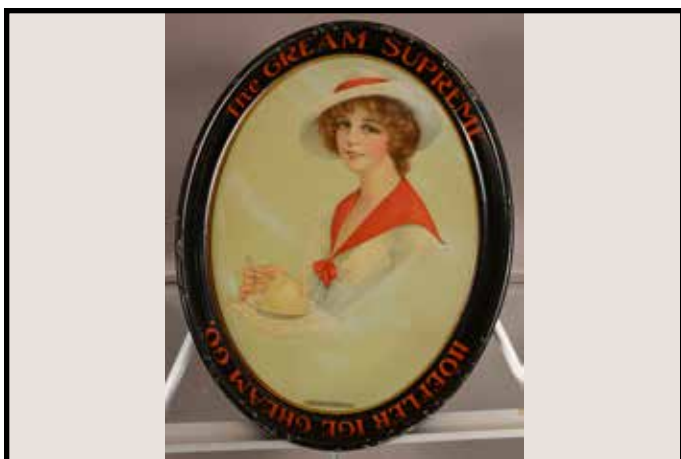
**Lot #408-** "Zang Snappy & Zang's Ice Cream" tray, ca. 1930, 13" x 10". Est. \$90-\$150.



**Lot #409**- "Coca Cola" tray, ca. 1930, 13" x 10".  
Est. \$40-\$90.



**Lot #410** - "De Coursey's" ice cream tray, ca. 1920, 13½"d.  
Est. \$80-\$140.



**Lot #411** - "The Cream Supreme" ice cream tray, ca. 1920, 16" X 12½". Est. \$80-\$400.



**Lot #412** - Banquet ice cream tray, ca. 1950, 13"d.  
Est. \$40-\$70.



**Lot #413**- Edelweiss beer tray, ca. 1913, 13"d.  
Est. \$40-\$70.



**Lot #414**- "Sealtest Ice Cream" tray, ca. 1950, 10" x 13".  
Est. \$40-\$70.

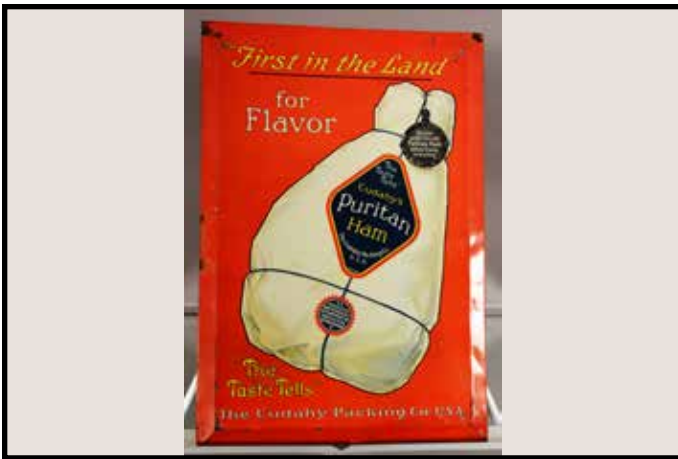




**Lot #415-** "Fearon's" ice cream tray, ca. 1920, 10" x 15".  
Est. \$70-\$120.



**Lot #416 -** "Lithia" drink tray, ca. 1930, 13" x 10".  
Est. \$40-\$90.



**Lot #417 -** "Puritan Ham" advertising sign, ca. 1930, 18" x 13". Est. \$40-\$90.



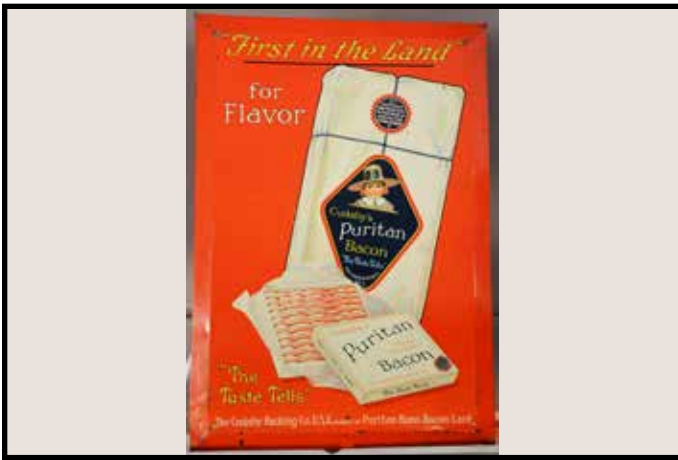
**Lot #418-** "Hires" tin advertising sign, ca. 1950, 12" x 14". Est. \$40-\$90.



**Lot #419-** "Coors" reverse painted on glass sign, ca. 1970, 11" x 26". Est. \$50-\$125.



**Lot #420-** "De Laval" cream separator tin sign, ca. 1920, Est. \$40-90.



**Lot #421** - "Puritan Ham: sign tin, ca. 1930, 18" x 13".  
Est. -\$40-\$90.



**Lot #422** - "Black Stone" cigar 2 sided glass sign,  
ca. 1920, double sides, 18" x 3". Est. \$50-\$125.



**Lot #423** - Prescription glass sign, ca. 1920, 17" x 7".  
Est. \$50-\$125.



**Lot #424** - "Jantzen Sportswear" glass sign, ca. 1930,  
12" x 6". Est. \$50-\$90.



**Lot #425**- "Nu Grape" thermometer, ca. 1930, 13"d.  
Est. \$75-\$125.



**Lot #426**- "Sun Crest" advertising clock, ca. 1930, 15"d.  
Est. \$125-\$275.





**Lot #427**- "Dr. Pepper" red tin sign, ca. 1950, 23" x 13".  
Est. \$40-\$90.



**Lot #428** - "Dr. Pepper" white sign, ca. 1950, 27" x 12".  
Est. \$40-\$90.



**Lot #429**-. "Fairy" soap tray, ca. 1905, 4"d.  
Est. \$40-\$90.



**Lot #430**- Morrell's advertising calendar, ca. 1920, 5" x 9".  
Est. \$75-\$150.



**Lot #431**-Merry War Soap advertising tin, ca. 1905,  
5½" x 3½". Est. \$40-\$90.



**Lot #432**- "Pepsi" tin sign, ca. 1950, 31" x 12".  
Est. \$40-\$90.



**Lot #433-** "Lush's" Japanese tea box, wood box with lift top, ca. 1920, 10"t x 9"d x 13"w. Est. \$50-\$90.



**Lot #434** - Japanese letter box, hand painted lift top wooden box, ca. 1900, 6"t x 6"d x 11"w. Est. \$50-\$100.



**Lot #435** - 2 Heinz Soup tin signs, ca. 1950, 27"w x 12"w. Est. \$25-\$75.



**Lot #436** - Sun Crest thermometer tin sign, ca. 1930, 17"t. Est. \$100-\$175.



**Lot #437**- Hires Root Beer tin advertising sign/ thermometer, ca. 1950, 29"t. Est. \$100-\$175.



**Lot #438**- Coca Cola tin advertising thermometer/sign, ca. 1960, 29"t. Est. \$100-\$175.





**Lot #439**- Coca Cola tin advertising sign, ca. 1960, 36" w x 12". Est. \$50-\$90.



**Lot #440** - Orange Crush tin sign, ca. 1940, 44" t x 17" w. Est. \$150-\$300.



**Lot #441** -. 3 porcelain advertising signs, ca. 1990, Maytag, Elvis & Borden's. Est. \$25-\$50.



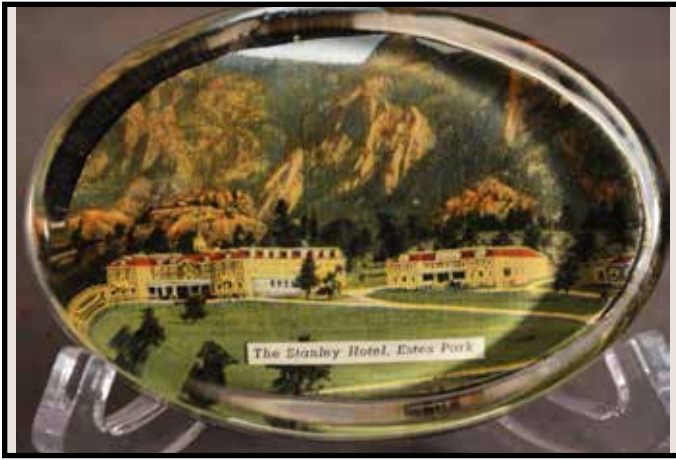
**Lot #442**- "Dr. Lynas" paper advertising sign, ca. 1920, 10" x 14". Est. \$25-\$50.



**Lot #443**- Broadmoor Hotel Metal sign, very heavy, ca. 1950, 42" t x 27" w. Est. \$100-\$175.



**Lot #444**- Cetacolor advertising sign, ca. 1900, 23" x 36" framed. Est. \$75-\$150.



**Lot #445-** “Stanley Hotel” Estes Park Colorado paper weight, ca. 1920, 4” x 3”. Est. \$25-\$50.



**Lot #446 -** “Orange Crush” bottle, ca. 1940, 8”t. Est. \$50-\$100.



**Lot #447 -** Broadmoor Hotel collection showcase, golf hat & tin, ca. 1960, 13”t x 10”w. Est. \$50-\$100.



**Lot #448 -** “The Broadmoor Hotel” print of original by Maxfield Parrish on bronze easel, ca. 1960, 6” x 5”. Est. \$50-\$100.



**Lot #449-** Broadmoor ashtray & plate, ca. 1930. Est. \$25-\$50.



**Lot #450-** “K&W Fancy Print Butter Carrier” strong box, ca. 1910, 9 ½” x 12”. Est. \$50-\$100.





**Lot #451**- Miniature stoneware jars, 'Yale Mustard', 'As You Like Horde-Radish', ca. 1910, 4"t. Est. \$50-\$100.



**Lot #452** - "J.P. Priwley's Gum Case, California fruit & pepsin, etched under carved glass, chewing gum, ca. 1900. 9½"t x 12"d x 18"w. Est. \$250-\$500.



**Lot #453** - "Henry Troemner" Philadelphia gold scale, oak case with beveled glass, ca. 1890, 9"t x 6"d x 13"w. Est. \$250-\$400.



**Lot #454**- "Nestea Iced Tea" dispenser, ca. 1950, 13"t. Est. \$50-\$100.



**Lot #455**- Maytag Dairy Farms Cheese Dish, vintage sanitary cheese preserver, covered glass container, embossed instructions on lid, ca. 1940, 7"d. Est. \$50-\$100.



**Lot #456**- 1933 A Century of Progress, Pin Ball game, ca. 1933, Chicago, 11" x 18". Est. \$75-\$150.



**Lot #457**- "Old Dutch Cleanser" advertising poster, ca. 1900, 24" x 30" framed. Est. \$75-\$150.



**Lot #458** - Early American sampler, "1879", ca. 1879, 22" x 33" framed. Est. \$150-\$300.



**Lot #459** - Miniature Maytag Toy Washing Machine, metal ERTL advertising doll toy, ca. 1960, 6"t. Est. \$40-\$75.



**Lot #460** - Michael Garman "High Trails" statue, hand painted, signed, a. 1980, 10" t. Est. \$50-\$100.



**Lot #461**- Michael Garman "Horsemen" statue, hand painted, signed, ca. 1980, 13". Est. \$50-\$100.



**Lot #462**- Planters Peanuts 5¢ jar, ca.1960, 12"t. Est. \$40-\$75.





**Lot #463**- Wood harp, ca. 1960, 30"t.  
Est. \$50-\$100.



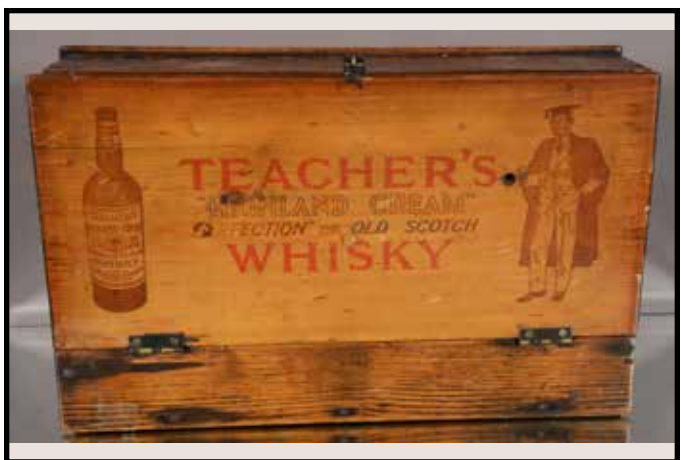
**Lot #464** - Mandolin mixed woods, ca. 1960, 30"L.  
Est. \$50-\$100.



**Lot #465** -Stereo viewer & cards, App.. 78 cards, ca. 1900. Est. \$75-\$200.



**Lot #466**- Antique Celluloid dresser box, ca. 1900, 12"w.  
Est. \$50-\$90.



**Lot #467**- Teacher's Whiskey box, ca. 1900, 4½" x 10"d x 17"w. Est. \$40-80.



**Lot #468**- Fred's Tobacco Store advertising sign, Gallup New Mexico, ca. 1909, 22" x 18" framed.  
Est. \$75-\$150.



**Lot #469**- 1915 Calendar Victorian lady, ca. 1915, 25" x 20" framed. Est. \$100-\$175.



**Lot #470** - Wild Fruit Prang chromolithograph, walnut frame, ca. 1872, 17" x 14". Est. \$50-\$100.



**Lot #471** - "Whitters Barefoot Boy" chromolithograph. Prang, ca. 1872, 17" x 14". Est. \$50-\$100.



**Lot #472** - "E. Muth's Snuff" stoneware jar with lid, ca. 1770, Lancaster, PA, 9"t. Est. \$200-\$400.



**Lot #473**- Early blue decorated stoneware, 2 gallon crock, ca. 1850, 9" x 10". Est. \$100-\$200.



**Lot #474**- Early 1 gallon crock, ca. 1870. 8" x 8". Est. \$60-\$90.





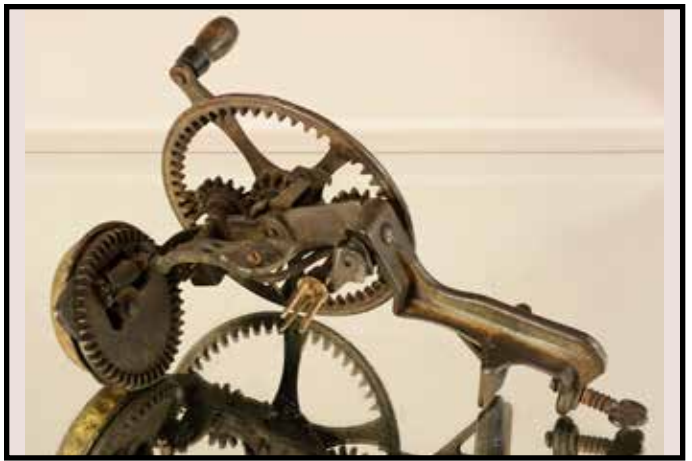
**Lot #475-** Michael Garman display, ca. 1990, signed, 10" x 12". Est. \$50-\$100.



**Lot #476 -** 3 stoneware crocks with blue advertising, ca. 1920, The Western 9½"t, Beans 8"t, Wessen Oil 5"t. Est. \$50-\$100.



**Lot #477 -** 5 gallon stoneware water server with cobalt blue rings, ca. 1920, 16"t x 12"d. Est. \$175-\$350.



**Lot #478-** #78 iron apple peeler, 11"t. Est. \$50-90.



**Lot #479-** Victorian oak coal hod with brass handle & floral carved door, ca. 1900, 15"t x 17"d x 12"w. Est. \$125-\$250.



**Lot #480-** Art nouveau decanter set, cut glass pitcher & 6 glasses with overlay, ca. 1910, 10"t. Est. \$100-\$250.



**Lot #481** - Victorian Caster set with 8 bottles, ca. 1890, 11" x 8". Est. \$75-\$150.



**Lot #482** - Oak flower seed box, D. M. Ferry & Co., Detroit, Michigan, ca. 1900, 4" x 11". Est. \$50-\$100.



**Lot #483** - Pair of French Louis XIV style bronze and marble vases, ca. 1900, 16"t. Est. \$200-\$375.



**Lot #484** - French Louis IV style bronze center bowl, ca. 1900, est. 4" x 11". Est. \$100-\$175.



**Lot #485** - French Louis XV style porcelain jewelry box, 20th century, 6" x 11". Est. \$100-\$175.



**Lot #486** - Michael Garman "Early Editor" statue, hand painted, signed, ca. 2001, 13"t. Est. \$100-\$175.





**Lot #487** - Carved wood horse, 20th century, hand carved & painted, 58". Est. \$800-\$1200.



**Lot #488** - Early Folk Art wood horse, ca. 1860, 25" x 24". Est. \$400-\$700.



**Lot #489** - American walnut Barbers chair with swans carved on arms, reclines with stool, good condition, ca. 1870, 44" x 26"d x 25"w. Est. \$350-\$600.



**Lot #490** - American pine dry sink, 2 doors in base, ca. 1900, 32"t x 19"d x 49"w. Est. \$225-\$450.



**Lot #491** - Arts & crafts style oak 4 drawer file cabinet, finished on all sides, ca. 1920, 52"t x 24"d x 15"w. Est. \$175-\$350.



**Lot #492** - Stickley Bros. oak triple door bookcase, arts & crafts style, metal tag on back, quartered oak, Quait Furniture Stickley Bros. Grand Rapids, Mich., ca. 1910. 47"t x 12"d x 62"w. Est. \$800-\$1200.



**Lot #493**- 1920 walnut doctors cabinet with milk glass shelf in front, Hamilton Manufacturing Co., ca 1920, 60”t x 17”d x 30”w. Est. \$250-400.



**Lot #494** - Turn of the century oak 4 drawer side cabinet with pull out tray, ca. 1900, 36”t x 15”d x 18”w. Est. \$175-\$250.



**Lot #495** - Turn of the century “Windsor” lift top ice box, ca. 1900, 36” x 16” x 18”w. Est. \$225-\$400.



**Lot #496** - 1905 music cabinet with 1 door & 1 drawer, ca. 1905, 38”t x 14”d x 21”d. Est. \$100-\$175.



**Lot #497**- Arts & crafts oak smokers cabinet, 2 doors, ca. 1910, 32”t x 14”d x 14”w. Est. \$225-\$400.



**Lot #498**- Turn of the century 10 drawer oak file cabinet, ca. 1900, 31”t x 15”d x 15”t. Est. \$125-\$250.





**Lot #499**- Chinese antique wooden high chair, ca. 1900, 39"t x 18" x 16". Est. \$125-\$250.



**Lot #500** - Arts & crafts oak hallstand, ca. 1920, 68" t x 20"w. Est. \$75-\$150.



**Lot #501** -Chippendale style mahogany corner cabinet, 1 drawer, 1 door, 20th century, 75"t x 31"w. Est. \$250-\$400.



**Lot #502**- Victorian style mahogany hallstand with carved crest, beveled glass mirror, 1 drawer, 20th century, 92"t x 16"d x 52"w. Est. \$275-\$400.



**Lot #503**- Chippendale style 2 drawer mahogany writing desk, 20th century, 30"t x 24"d x 41"w. Est. \$125-\$200.



**Lot #504**- French style oval vitrine with serving tray on top, beveled glass sides, 2 doors, late 20th century, 31"t x 29"w. Est. \$150-\$275.



**Lot #505-** French style oval vitrine with serving tray, beveled glass sides, 2 doors on sides, late 20th century, 31”t x 29”w. Est. \$150-\$275.



**Lot #506 -** Turn of the century square oak dining room table with 5 large fluted legs, quartered oak construction, 3 leaves, ca. 1900, 30”t x 42”w. Est. \$275-\$400.



**Lot #507 -** 2 French Louis XV style salon chairs, floral carved crest, corners, skirts & legs, mahogany, late 20th century, 40”d x 23”d x 28”. Est. \$175-\$350.



**Lot #508 -** French style swivel mirror, shaped & beveled, adjustable on carved legs, late 20th century, 70”t x 23”w. Est. \$125-\$250.



**Lot #509-** 1920's French style arm chair & stool, ca. 1920, 42”t x 28”d x 32”w. Est. \$125-\$250.



**Lot #510-** French Louis XIV side table with 3 drawers on 4 cabriole legs, late 20th century, 28”t x 15”d. Est. \$75-\$150.





**Lot #511**- American Victorian walnut lamp table, ca. 1870, 30”t x 12”d. Est. 125-\$250.



**Lot #512** - American Victorian walnut lamp table with ebonized trim, ca. 1870, 29”t x 13”d. Est. \$125-\$250.



**Lot #513** - Early country style walnut washstand with curved back, towel bars on sides, hand cut dovetails on drawer, ca. 1870, 33”t x 18”d x 27”w. Est. \$75-\$150.



**Lot #514**- Early American spinning wheel, turned maple construction ca. 1870, 36”t x 30”L. Est. \$125-\$275.



**Lot #515**- Victorian style walnut lift top stool, ca. 1880, 16”t x 21”w. Est. \$50-\$90.



**Lot #516**- Arts & crafts style oak luggage rack from The Broadmoor Hotel, ca. 1920, 18”t x 15”d x 30”w. Est. \$100-\$175.



**Lot #517**- Unusual oak bob sled, ca. 1870, 16”t x 13”d x 50”L. Est. \$175-\$250.



**Lot #518** - Antique child's oak sled, ca. 1900. 24”w. Est. \$75-\$150.



**Lot #519** - Turn of the century child's oak press back rocker, ca. 1900, 27”t. Est. \$50-\$90.



**Lot #520** - Antique child's wicker chair, Bar Harbor style, ca. 1910, 21”t x 15”d x 19”L. Est. \$50-\$90.



**Lot #521**- Child's ice cream chair, ca. 1905, 20”t x 10”d x 9”w. Est. \$25-\$50.



**Lot #522**- Turned oak hat rack with 5 hooks, ca. 1900, 33”L. Est. \$50-\$90.





**Lot #523-** Antique sterling & Ivory walking cane with sword, marked 925, ca. 1900, 37"L. Est. \$175-\$350.



**Lot #524 -** Mans walking cane and sword with cut glass, knob with scorpion in handle, 20th century, 34"L. Est. \$100-\$175.



**Lot #525 -** 2 walking canes with sterling knobs and bands, ca. 1920, 33"L & 36"L. Est. \$150-\$275.



**Lot #526-** 4 mens walking canes, 20th century, 32"L to 36"L. Est.\$100-\$175.



**Lot #527-**4 umbrellas, ca. 1910, 33"L to 41"L. Est. \$100-\$175.



**Lot #528-** Antique ivory chess set with game board, ca. 1920's. Est. \$325-\$600.



**Lot #529**- Lotto game in original box, ca. 1900, 10" x 11". Est. \$40-\$90.



**Lot #530** - Animated music box with approx. 40 discs, ca. 1980. Est. \$100-\$175.



**Lot #531** - 3 Chinese baskets, 20th century, 10"t. Est. \$40-\$100.



**Lot #532** - Canton blue & white tea pot in wood container, 20th century, 9"t. Est. \$75-\$100.



**Lot #533**- 4 Chinese pieces: jade tree, enameled box, cinnabar box, jade handled magnifying glass, 20th century. Est. \$200-\$375.

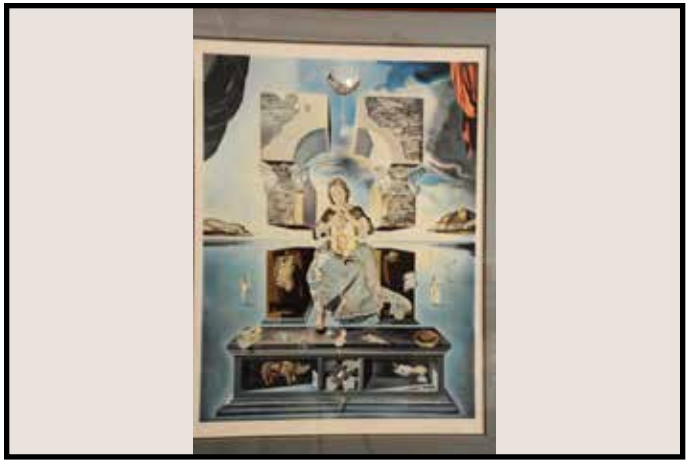


**Lot #534**- 2 cloisonné dresser Piece mirror & brush, ca. 1900, 10"L x 9"L. Est. \$75-\$150.





**Lot #535**- 4 piece dresser set: tray 18"L, Brush 9"L, Comb 10"L, mirror 14", ca. 1910. Est. \$100-\$175.



**Lot #536** - Salvador Dali signed and numbered lithograph, "Madonna of Port Ligat", signed lower right 127/199, ca. 1950, 22" x 29" framed. Est. \$500-\$900.



**Lot #537**- Salvador Dali Crucifixion (Corpus Hypercubus) lithograph, signed lower right, 122/199. Est. \$600-\$1100.



**Lot #538**- J. Cameron "Forest Park at Night" lithograph, signed, 12" x 17". Est. \$100-\$175.



**Lot #539**- P. Geonetta Landscape on board, signed lower left, ca. 1960, 10"x 13". Est. \$100-\$250.



**Lot #540**- Early Chinese photo of a man & woman, ca. 1900, 10" x 8". Est. \$50-\$90.



**Lot #541** - Early Chinese photograph, ca. 1900.  
10" x 8" Est. \$50-\$90.



**Lot #542** - Antique embroidered silk wall hanging,  
ca. 1900, 80" x 32". Est. \$150-\$250.



**Lot #543** - 2 antique Chinese tomb figures, 19th century,  
6½"t framed. Est. \$150-\$375.



**Lot #544** - Chinese picture of woman washing, 20th  
Century, 22" x 26". Est. \$50-\$100.



**Lot #545** - Chinese painting of a man, 20th century,  
22" x 26". Est. \$50-\$100.

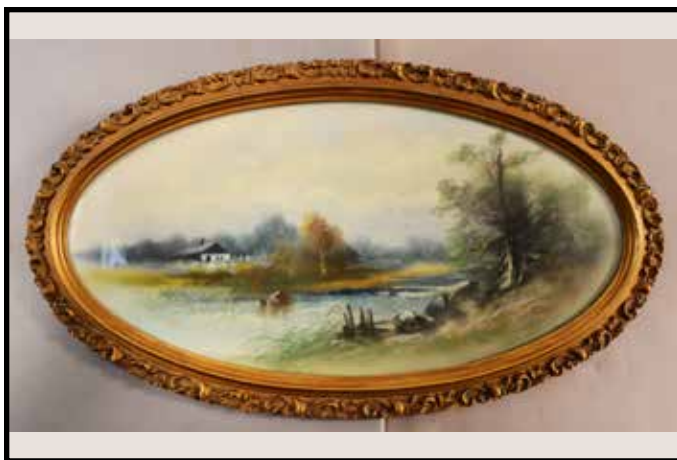


**Lot #546** - 2 Chinese silk embroidered figures, 20th  
Century, 13"d framed. Est. \$50-\$100.





**Lot #547-** Chinese landscape on silk, artist signed lower right, 13" x 7". Est. \$75-\$150.



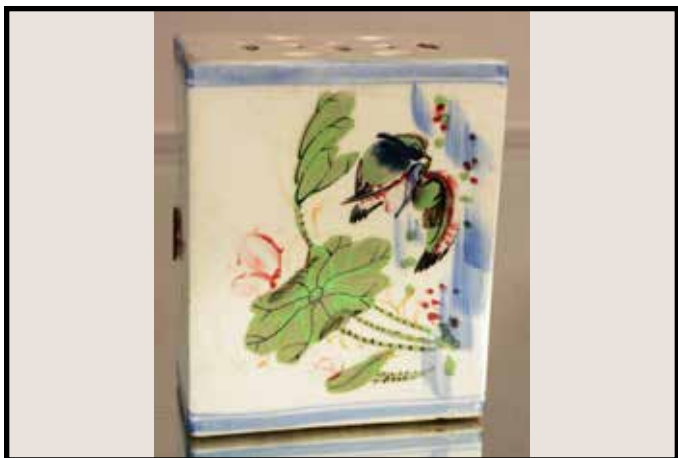
**Lot #548-** Frick Landscape water color in oval frame, artist signed, ca. 1900, 22" x 12". Est. \$75-\$150.



**Lot #549-** Cameo & pendant under glass, 20th century, 14" x 8". Est. \$50-\$100.



**Lot #550-** Chinese bronze dragon, 20th century, 9"L. Est. \$75-\$150.



**Lot #551-** Chinese porcelain blue & floral decorated jar with birds, hand painted, ca. 1900, 5½" x 4½". Est. \$125-\$250.



**Lot #552-** Parian style salt glaze figural covered jar, 19th century. Est. \$75-\$150.



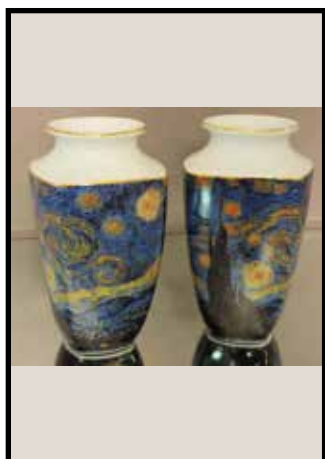
**Lot #553-** Mettlach German tobacco jar, signed Mettlach on bottom, ca. 1900, 10”t. Est. \$225-\$400.



**Lot #554** - Villeroy & Boch ½ liter German stien, ca. 1900, 7”t. Est. \$75-\$200.



**Lot #555** - 2 Chinese porcelain water buffalo figures, early 20th century, 5”L. Est. \$50-\$100.



**Lot #556** - Pair of Vincent Van Gogh Goebel decorated 8” vases, 20th century. Est. \$40-\$90.



**Lot #557** - 4 Limoges style decorated plates, hand painted with gold trim, ca. 1900, 8” & 9”d. Est. \$50-\$100.



**Lot #558**-Victorian pickle castor with etched glass inside, ca. 1890, 12”t. Est. \$75-\$150.



**Lot #559-** “1910” calendar plate, Hugo, Colorado, ca. 1910, 7½”d. Est. \$25-\$50.



**Lot #560-** “1911” calendar plate Fort Morgan, Colorado, ca. 1911, 8”d. Est. \$25-\$50.



**Lot #561**- Pikes Peak blue transfer plate, ca. 1910, 9½”d. Est. \$40-\$70.





**Lot #562-** 4 Chinese blue on grey rice bowls, 19th century, 6”d. Est. \$100-\$275.

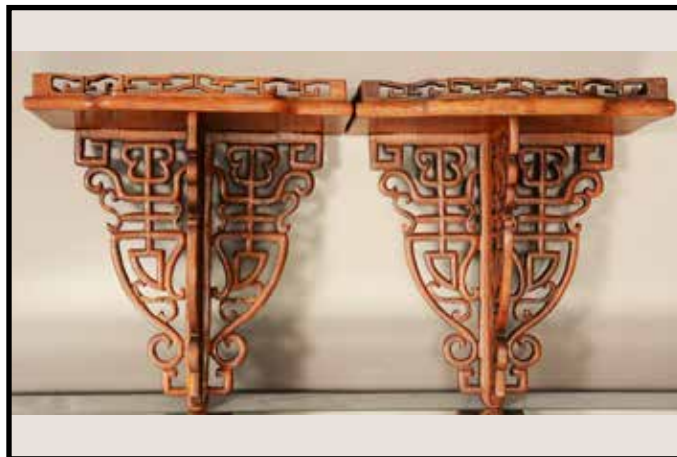
## Classic Blue on Grey



**Lot #563-** 7 Chinese blue on grey plates, 19th century. Est. \$100-\$275.



**Lot #564** - Chinese wood box with covered sliding lid & dovetail sides, early 20th century, 7”L. Est. \$40-\$90.



**Lot #565** - Pair of Chinese rosewood shelves, classic Chinese style, China, ca. 1900, 11”t x 7”w. Est. \$50-\$100.



**Lot #566** - Antique pitcher & bowl set, ca. 1900, 11”t x 17”d. Est. \$75-\$150.



**Lot #567-** Pickard china, 26 pieces, ca. 1920. Est. \$75-\$150.



**Lot #568-** Pair of Bronze cherubs eating grapes, 20th century, 12”t. Est. \$125-\$275.



**Lot #569-** Bronze Chinese religious figure, signed on back of statue, 20th century, 9”t. Est. \$100-\$275.



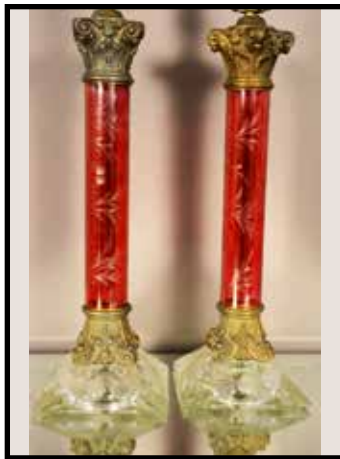
**Lot #570-** Pair of water buffalo, carved with glass eyes, China, 20th century, 7"t. Est. \$50-\$125.



**Lot #571-** Chinese wood dragon, carved, gilded, ca. 1900. Est. \$50-\$100.



**Lot #572-** Michael Garman statue, signed on bottom, ca. 1990, 12"t. Est. \$50-\$100.



**Lot #573-** Pair of Victorian style etched lamps with etched cranberry columns, ca. 1920, 30"t. Est. \$75-\$150.



**Lot #574-** Chinese headstone ceremonial piece, 20th century, 22". Est. \$250-\$400.



**Lot #575-** 9 primitives, ca. 1900. Est. \$100-\$250.



**Lot #576-** Early copper & iron bed warmer, ca. 1870. Est. \$75-\$275.





**Lot #577** - 11 kitchen primitive pieces, ca. 1900.  
Est. \$75-\$100.



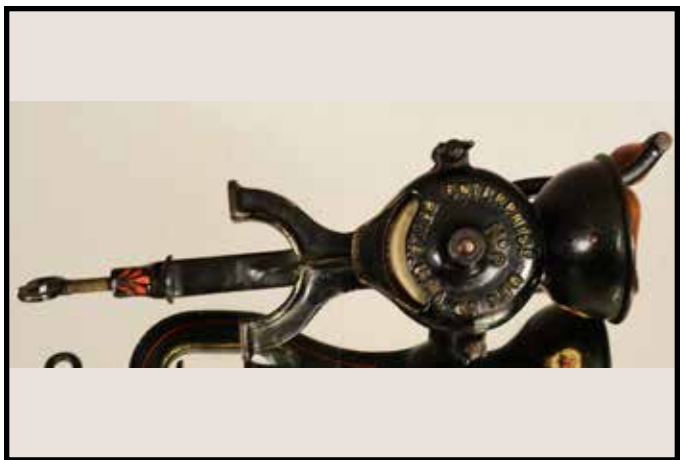
**Lot #578** - 6 country primitive pieces, ca. 1900.  
Est. \$100-\$250.



**Lot #579** - 6 wood primitive boxes, 20th century.  
Est. \$50-\$100.



**Lot #580** - 3 antique grinders, coffee, nutmeg, unusual,  
ca. 1920. Est. \$50-90.



**Lot #581** - Enterprise No. 0 grinder with original paint,  
ca. 1900. Est. \$50-\$90.



**Lot #582** - Pair of early wood & iron ice skates, ca. 1880.  
Est. \$50-\$90.



**Lot #583-** 2 children's iron pieces, tea pot & waffle iron, ca. 1990, 6"t. Est. \$50-\$100.



**Lot #584-** 2 butter churns, Dazey #4 & wood churn, ca. 1910. Est. \$50-\$90.



**Lot #585-** 10 kitchen pieces, knife box, beaters, ca. 1910. Est. \$50-\$125.



**Lot #586-** 3 small baskets with wooden fruit & eggs, ca. 1910. Est. \$50-\$90.



**Lot #587-** 2 gold rimmed glasses with case, ca. 1900. Est. \$25-\$75.



**Lot #588-** Child's school blackboard & dough bowl, ca. 1905. Est. \$50-\$75.





**Lot #589**- Coors mortar & pestle & covered stoneware jar. Est. \$100-\$200.



**Lot #590** - Broadmoor Hotel silver flask, Major Tournaments, ca. 1898-1941, 6"t. Est. \$50-\$100.



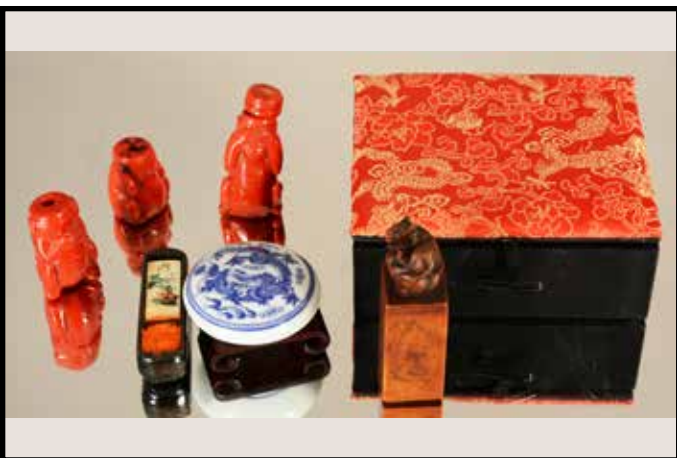
**Lot #591** - Vintage Santa Clara Pueblo pottery vase, Yolanda and James, signed on bottom, 6"t. Est. \$50-\$125.



**Lot #592** - Art Nouveau purse & pair of French open glass binoculars with case, bag 7" x 8", ca. 1900. Est. \$75-\$150.



**Lot #593**- 3 bells: 2 brass school bells, 1 glass Hershey's chocolate bell, ca. 1880-1950. 12" x 6" x 4"t. Est. \$50-\$90.



**Lot #594**-5 Chinese pieces: 2 stamps & 3 snuff bottles, hard-stone, 20th century. Est. \$75-\$150.



**Lot #595-** 3 Chinese pieces: tea box & tin, brass holder, ladle, 20th century. Est. \$40-\$90.



**Lot #596-** 12 vintage Chinese blue on grey bowls, 20th century. Est. \$40-\$90.



**Lot #597-** 2 pieces: Chinese brass lock in the form of a fish 9"L, Tibetan prayer wheel, early 20th century. Est. \$50-\$90.



**Lot #598-** 4 Chinese pieces: 2 birds, scale, turtle, 20th century. Est. \$40-\$90.



**Lot #599-** Chinese art glass green vase, 20th century, 6½"t. Est. \$25-\$50.



**Lot #600-** 3 Chinese decorated boxes, 20th century Est. \$25-\$50.





**Lot #601** - 4 Chinese dolls, 20th century, 8".  
Est. \$100-\$175.



**Lot #602** - 20" Doll, 20th century.  
Est. \$40-\$80.



**Lot #603** - 20" Bisque Doll, 20th century.  
Est. \$40-\$80.



**Lot #604** - 12 Chinese character dolls, 20th century.  
Est. \$100-\$250.



**Lot #605**- 2 Japanese dolls, 20th century.  
Est. \$100-250.



**Lot #606**- 6 Japanese dolls, 20th century.  
Est. \$40-\$90.



**Lot #607-** 5 Japanese dolls, 20th century.  
Est. \$75-\$150.



**Lot #608-** 2 Chinese dolls, 11"t. Est. \$100-\$275.



**Lot #609-** 4 Chinese dolls, 20th century. Est. \$40-\$100.



**Lot #610-** 4 Chinese dolls, made by Christian Missionary Alliance Renneis' Mill Camp, Hong Kong, ca. 1920.  
Est. \$75-\$150.



**Lot #611-** Character doll, 11", ca. 1920. Est. \$40-\$90.



**Lot #612-** Charlie Weaver Bartender, merchant doll, ca. 1950, 12"t. Est. \$40-\$90.





**Lot #613-** Chinese baby clothes, 1 hat, 4 pair of shoes, 20th century. Est. \$50-\$100



**Lot #614 -** Schmidt print of house, 26" x 18" framed. Est. \$40-\$90.



**Lot #615-** Maps of world 1778 copy, Paris, 17" x 25" framed. Est. \$60-\$100.



**Lot #616-** Early district map of world copy, 18" x 32". Est. \$40-\$100.



**Lot #617-** Landscape by Morcan print, 20th century, 26" x 32" framed. Est. \$40-\$100.



**Lot #618-** Fisherman by Winslow Home, 20th Century, 28" x 41" framed print. Est. \$50-\$100.



**Lot #619-** Street scene by Schmidt, signed & numbered, 20th century. Est. \$50-\$100.



**Lot #620-** Water mill picture, 29" x 41" framed. Est. \$40-\$100.



**Lot #621-** Chinese mirror, oval, hand painted & gilded, 20th century. Est. \$100-\$175.



**Lot #622-** Grand Prix race car, wood, 20th century, 30"L. Est. \$90-\$150.



**Lot #623-** Chippendale style barometer, ca. 1960, 38". Est. \$100-\$175.



**Lot #624-** Hump back trunk. Est. \$50-\$100.



**Lot #625-** English style Canterbury, ca. 1920, 21" t x 14" d x 19" w. Est. \$75-\$150.



#### CONDITIONS OF SALE- BRUHNS AUCTION GALLERY, INC. AS AGENT

The lots offered by Bruhns Auction Gallery, Inc. as owner or as agent for consignor(s) subject to the following terms and conditions. By bidding at auction you agree to be bound by these

**BEFORE THE SALE-** Prospective buyers are strongly advised to personally examine any property in which they are interested before the auction takes place. Condition reports are usually available on request. All lots are sold "AS IS" and without recourse and neither Bruhns Auction Gallery, Inc. nor its consignor(s) makes any express or implied warranty or representation of any kind or nature with respect to such lots. Neither Bruhns Auction Gallery, Inc. nor its consignor(s) makes any express or implied warranty or representation of any kind or nature with respect to merchantability, fitness for purpose, correctness of the catalogue or other description of the physical condition, size, quality, rarity, importance, medium, material, genuineness, attribution, provenance, period, culture, source, origin, exhibitions, literature or historical significance of any lot sold. The absence of any reference to the condition of a lot does not imply that the lot is in perfect condition or completely free from wear and tear, imperfections or the effects of aging. No statement, whether written or oral, and whether made in the catalogue, or in supplements to the catalogue, an advertisement, a bill of sale, a salesroom posting or announcement, the remarks of an auctioneer, or otherwise, shall be deemed to create any warranty, representation, or assumption of liability. Bruhns Auction Gallery, Inc. and its consignor(s) make no warranty or representation, expressed or implied that the purchaser will acquire any copyright or reproduction rights to any lot sold. Bruhns Auction Gallery, Inc. expressly reserves the right to reproduce any image of the lots sold in the catalogue.

**Refusal of Admission** -Bruhns Auction House, Inc. has the right, at our complete discretion, to refuse admission to the premises or participation in any auction and to reject any bid.

**Registration before Bidding** -A prospective buyer must complete and sign a registration form and provide identification before bidding. We may require bank or other financial references.

**Bidding as Principal** -When making a bid, a bidder is accepting personal liability to pay the charges, unless it has been explicitly agreed upon in writing with Bruhns Auction House, Inc. before the commencement of the sale that the bidder is acting as agent on behalf of an identified third party acceptable to Bruhns Auction House, Inc., and that Bruhns Auction House, Inc. will only look to the principal for payment.

**Absentee Bids** -We will use reasonable efforts to carry out written bids given to us prior to the sale for the convenience of clients who are not present at the auction in person, by an agent or by telephone. Bids must be placed in U.S. dollars. If we receive written bids on a particular lot for identical amounts, and these are the highest bids on the lot at the auction, it will be sold to the person whose written bid was received and accepted first. Execution of written bids is a free service undertaken subject to other commitments at the time of the sale and we do not accept liability for failing to execute a written bid or for errors and omissions in connection with the written bid.

**Telephone Bids** -A prospective buyer must make arrangements with us prior to the commencement of the sale we will use reasonable efforts to contact them to enable them to participate in the bidding by telephone and we do not accept liability for failure to do so or for errors and omissions in connection with telephone bidding. These telephone bids may be recorded at the discretion of Bruhns Auction House, Inc.

**Online Bids** -We will use reasonable efforts to carry out online bids and do not accept liability for equipment failure, inability to access the internet or software malfunctions related to the execution of online bids.

**Reserves**-Some lots in the sale are subject to a reserve which is the confidential minimum price below which such lot will not be sold. The reserve will not exceed the low estimate of the lot. Reserves are agreed upon with consignors or, in the absence thereof, the absolute discretion of Bruhns Auction House, Inc. The auctioneer may open the bidding on any lot below the reserve by placing a bid on behalf of the seller. The auctioneer may continue to bid on behalf of the seller up to the amount of the reserve, either by placing consecutive bids or by placing bids in response to other bidders. With respect to the lots that are offered without reserve, unless there are already competing bids, the auctioneer, in his or her discretion, will generally open the bidding at half of the low estimate for the lot. In the absence of a bid at that level, the auctioneer may proceed backwards at his or her discretion until a bid is recognized, and then continue up from that amount.

**Auctioneer's Discretion**-The highest bidder acknowledged by the auctioneer will be the purchaser. In the case of a tie bid, the winning bidder will be determined by the auctioneer at his or her sole discretion. In the event of a dispute between bidders, the auctioneer has final discretion to determine the successful bidder or to reoffer the lot in dispute. If any dispute arises after the sale, the Bruhns Auction House, Inc. sale record shall be conclusive. Title passes upon the fall of the auctioneer's hammer to the highest acknowledged bidder subject to the Conditions of Sale set forth herein, and the bidder assumes full risk and responsibility.

**Buyer's Premium**-In addition to the hammer price, the buyer agrees to pay Bruhns Auction House, Inc. a buyer's premium and the applicable sales tax added to the final total price. The buy's premium for purchases made online/phone is twenty-one percent (21%) of the hammer price.

**Payment**-The buyer must pay the entire amount due (including the hammer price, buyer's premium and all applicable taxes and other charges) no later than 5 p.m. on the seventh (7) business day following the sale. Payment in U.S. dollars may be made with cash; bank check or cashier's check drawn on a U.S. bank; money order, or wire transfer unless other arrangements are made with Bruhns Auction House, Inc. Bruhns Auction House, Inc. reserves the right to hold merchandise purchased by personal check until the check has cleared the bank. The purchaser agrees to pay Bruhns Auction House, Inc. a handling charge of \$50.00 for any check dishonored by the drawee. Collecting Purchases. Once Bruhns Auction House, Inc. has received all funds due to us; the buyer shall collect purchased lots within seven (7) business days from the date of the sale.

**Packaging and Shipping**-If your bid is successful; we can provide you with a list of shippers. We will not be responsible for the acts or omissions of carriers or packers whether or not recommended by us. Property will not be released to the shipper without the buyer's written consent and until payment has been made in full. Packing and handling of purchased lots by us is at the entire risk of the purchaser, and Bruhns Auction House, Inc. will have no liability of any loss or damage to such items.

The buyer's premium for purchases made in-house is eighteen percent (18%) of the hammer **Non Payment**-If we do not receive payment in full, in good cleared funds, within seven (7) business days following the sale, we are entitled in our absolute discretion to exercise on or more of the following measures, in addition to any additional actions available to us by law:a.) to impose a late charge of one and a half percent (1.5%) per thirty (30) days of the total purchase price b.) to hold the defaulting buyer liable for the total amount due and to begin legal proceedings for its recovery together with interest, legal fees and cost to the fullest extent permitted under applicable law c.) To cancel the sale d.) to resell the property publicly or privately with such terms as we find appropriate, to resell the property at public auction without reserve, and with the purchaser liable for any deficiency, cost, including handling charges, the expenses of both sales, our commission on both sales at our regular rate, all other charges due hereunder and incidental damages. In addition, a defaulting purchaser will be deemed to have granted us a security interest in, and we may retain as collateral security for such purchaser's obligations to us, any property in our possession, owned by such purchaser. At our option, payment will not be deemed to have been made in full until we have collected funds represented by checks, or in the case of bank or cashier's checks, we have confirmed their authenticity e.) To offset against any amount owed f.) To not allow any bids at any upcoming auction by or on behalf of the buyer g.) To take other action as we find necessary or appropriate.

**Failure to Collect Purchases**-If property is not picked up within seven (7) business days following the sale, whether or not payment has been made, Bruhns Auction House, Inc. reserves the right to charge \$5.00 per lot per day or to deliver said property to a public warehouse for storage at the purchaser's expense. Bruhns Auction House, Inc. shall have not liability for any damage to property left on its premises for more than seven (7) business days following the sale. In addition, we reserve the right to impose a late charge of one and a half percent (1.5%) per month of the total purchase price if payment is not made in accordance with the conditions set forth herein. For property that is not picked up after (30) calendar days, an additional administration fee of \$75.00 will be charged. Property which is paid for but left on our premises for any reason in excess of sixty (60) calendar days is subject to sale by us with the balance of any funds recovered in excess of storage charges and any other fees being remitted to you.

**LIABILITY**-Condition Reports-Bruhn Auction House, Inc. is not responsible for the correctness of any statement of any kind concerning any lot, whether written or oral, nor for any other errors or omissions in description or for any faults or defects in any lot. Neither the seller, ourselves, our officers, employees or agents, give any representation, warranty or guarantee or assume any liability of any kind in respect of any lot with regard to merchantability, fitness for a particular purpose, description, size, quality, condition, attribution, authenticity, rarity, importance, medium, provenance, exhibition history, literature or historical relevance. Exempt as required by local law any warranty of any kind whatsoever is excluded by this paragraph.

**Purchased Lots**-If for any reason a purchased lot cannot be delivered in the same condition as at the time of sale, or should any purchased lot be stolen, undeliverable, or lost, prior to delivery, Bruhn Auction House, Inc. shall not be liable for any amount in excess of that paid by the purchaser.

**Legal Ramifications**-The rights and obligations of the parties with respect to these Conditions of Sale, the conduct of the auction and any matters connected with any of the foregoing shall be governed and interpreted by the laws of the jurisdiction in Colorado. If any part of these Conditions of Sale is found by any court to be invalid, illegal or unenforceable, that part shall be discounted and the rest of the conditions shall continue to be valid to the fullest extent permitted by law.

**Discretion**-Any and all of the above conditions may be waived or modified in the sole discretion of Bruhns Auction House, Inc. By bidding online, onsite, or by phone.

BRUHNS AUCTION GALLERY  
50 WEST ARIZONA ST  
DENVER, CO 80223  
303-744-6505  
BRUHNSAUCTION@GMAIL.COM  
LEFT BIDS

PADDLE NUMBER: \_\_\_\_\_

NAME: \_\_\_\_\_

BUSINESS NAME: \_\_\_\_\_

ADDRESS: \_\_\_\_\_

CITY/STATE/ZIP: \_\_\_\_\_

\_\_\_\_\_

PHONE: \_\_\_\_\_

CELL: \_\_\_\_\_

OFFICE: \_\_\_\_\_

FAX: \_\_\_\_\_

EMAIL: \_\_\_\_\_

DO YOU HAVE A RESALE TAX NUMBER? YES NO

IF YES, PLEASE LIST NUMBER: \_\_\_\_\_

\_\_\_\_\_

IS THIS A NEW ADDRESS/PHONE? YES NO

PLEASE REVIEW THE CONDITIONS OF SALE AND SIGN.

Print Name \_\_\_\_\_ Date \_\_\_\_\_

\_\_\_\_\_

Signature \_\_\_\_\_ Date \_\_\_\_\_

\_\_\_\_\_



**Bruhns Auction Galleries, Inc.**  
**50 W. Arizona Ave.**  
**Denver, CO 80223**  
**303-744-6505**  
**[BruhnsAuction.Com](http://BruhnsAuction.Com)**