

Antique Lighting and Architectural Auction





French Stained Glass Back Bar



Mexico Valley Landscape by José M. Velasco 1894

Antique Lighting and Architectural Auction

Featuring antique lighting, architectural, store fixtures, chandeliers, shades, crystal chandeliers and parts, antique gas and electric fixtures, vintage ceiling lights, and antique wall sconces. Over 150 French bronze, wrought iron, crystal, and brass light fixtures, elegant French bronze figural sconces. 1920's American soda fountain back bar, French back bars, dining room sets, massive 60" claw footed round oak table with six chairs, turn of the century oak buffet with leaded glass door, fireplace mantels, book cases, armoires, rare jewelry store showcase display cabinets, carved Victorian mantel mirror, French marble-top sideboard vitrine, Store fixture wall units, curved glass display cabinet's, huge massive French wrought iron gates, stained glass windows, American renaissance Victorian walnut Pierre mirror, 20 French clocks, sterling silver boxes, antique Chinese pieces, 15 pieces of original artwork, Mexico Valley Landscape attributed to José M. Velasco, Cloisonné, lamp parts, set of shades, plus more!

José María Tranquilino Francisco de Jesús Velasco Gómez Obregón (Temascalcingo, 6 July 1840 – Mexico City, 26 August 1912) was a 19th-century Mexican painter who made Mexican geography a symbol of national identity through his paintings. He was one of the most popular artists of the time and received many distinctions such as the gold medal of National Expositions of Bellas Artes in 1874 and 1876, the gold medal of the Philadelphia International Exposition in 1876 and the medal of the Paris' Universal Exposition in 1889. His painting *El valle de México* is considered Velasco's masterpiece.

His production can be classified into three periods: The academic years, from 1860 to 1889, that include *La Plaza de San Jacinto en San Ángel*, *Las montañas de la Magdalena*, *La Alameda de México*, *El bosque de Jalapa*, *El Cedro de Chimalistac* and *El Ahuehuete de Chapultepec*.

The period from 1890 to 1892, when he was in touch with French Impressionists, that includes *Valle de Mexico desde el cerro de Atrahuaco* and *Ajusco visto desde el Tepeyac*.

Finally, a personal period from 1892 to 1912, that includes

Rocas del cerro de Atzacualco, *Pirámide del Sol en Teotihuacán*, *Popocatepetl*, *Ixtlaciual*, *Templo de San Bernardo*, *Cascada de Nevaxa* and *El Puente de Metlac*.^[1]

Velasco was also interested in science. In 1879, he described a new species of *Ambystoma* found in the Santa Isabel lake, north of Mexico City, and published his observations in the Mexican scientific journal *La Naturaleza* (*La Naturaleza* 4: 216). The new species was named by Velasco *Siredon Tigrina*. In 1888 Alfredo Dugès (1826–1910) renamed the species and dedicated it to Velasco as *Ambystoma velasci* (see also *Plateau Tiger Salamander*).

Today the Government of the State of Mexico, where Velasco was from, presents an award for artistic merit in his name to painters born in that state. Among the most outstanding winners are Luis Nishizawa, Leopoldo Flores, Ignacio Barrios and Héctor Cruz.

The José María Velasco Museum was opened in 1992 in Toluca City with the task of preserving and promoting his paintings.

Source: Wikipedia



Lot #1 - French art deco style bronze chandelier with alabaster shade. Floral decorated center with six leaf design arms holding up alabaster shades. France. ca. 1920. 34" t x 30" w
USD LowEst: \$600 High Est: \$900



Lot #2 - French Louis XVI style bronze and crystal, sixteen arm chandelier with four crystal prisms mounted in center. France 1910. 30" t x 24" w. USD LowEst: \$800 High Est: \$1200



Lot #7 - French provincial style wrought iron hanging light fixture with eight arms. ca. 1920. 24" t x 24" w.
USD LowEst: \$150 High Est: \$275



Lot #8 - French provincial style, eight arm, wrought iron chandelier. ca. 1920. 30" t x 34" w
USD LowEst: \$275 High Est: \$450



Lot #3 - American Victorian style gas and electric light fixture. Original polished brass with original dated sockets and shade holder. Three electric arms facing down with period cut crystal shades. Three gas arms facing up with milk glass sleeves. ca. 1895. USD LowEst: \$625 High Est: \$975



Lot #4 - French art deco style, bronze and alabaster chandelier. Six red alabaster inserts. Nickel over bronze frame. ca. 1920. 30" x 16" w. USD LowEst: \$1200 High Est: \$1800



Lot #9 - French provincial style, six arm, iron light fixture. ca. 1930. 28" t x 27" w
USD LowEst: \$150 High Est: \$275



Lot #10 - French Louis XV style provincial iron light fixture with ten decorated arms. ca. 1920. 52" t x 46" w
USD LowEst: \$350 High Est: \$475



Lot #5 - Elegant French Louis XVI style bronze and crystal chandelier. Twelve arms with twelve cut prisms. Open Filigree center. ca. 1910. USD LowEst: \$1400 High Est: \$2000
www.bruhnsauction.com



Lot #6 - French provincial style tin tavern light fixture. Four hanging lights with glass panels on sides and bottom. ca. 1910. 22" t x 12" w. USD LowEst: \$125 High Est: \$250



Lot #11 - French Louis XVI style bronze light fixture with floral decoration on basketweave shade. ca. 1910. 18" t x 16" w . USD LowEst: \$325 High Est: \$450
www.bruhnsauction.com



Lot #12 - Dutch Chippendale style, eight arm, brass chandelier with double eagle motif on top. ca. 1910. 32" t x 29". USD LowEst: \$175 High Est: \$350
Spring 2015 Catalog



Lot #13- French Louis XIV style bronze and crystal, six arm, chandelier with prism mounted in center. ca. 1910. 34" t x 20" w. USD LowEst: \$550 High Est: \$750



Lot #14 - French Louis XV style bronze and alabaster chandelier. Heavy bronze casting with six fancy arms holding alabaster shades. ca. 1900. 30" w x 22" t. USD LowEst: \$650 High Est: \$900



Lot #19- Victorian Cranberry swirl patten pull down hall light. ca. 1890. 28" t x 8" w. USD LowEst: \$125 High Est: \$250



Lot #20 - American three arm gas chandelier with three etched shades. ca. 1900. 41" t x 22" w. USD LowEst: \$325 High Est: \$550



Lot #15 - French Louis XVI style bronze and crystal chandelier with floral ribbon design draped around sides. ca. 1910. 31" t x 19" w. USD LowEst: \$650 High Est: \$975



Lot #16 - French Louis XV style bronze and alabaster chandelier. Fancy decorated center with six dragon designed arms holding up alabaster shades. ca. 1910. 20" t x 30" w USD LowEst: \$650 High Est: \$900



Lot #21 - American Victorian style cranberry hall light. Brass burner signed P & A Plume & Atwood. ca. 1890. 28" t x 11" w. USD LowEst: \$225 High Est: \$400



Lot #22 -American Victorian style blue satin glass pull down hall light. Hand painted birds and flowers decorated on sides. Shade has small repair. ca. 1890. 18" t x 12" w. 36" overall. USD LowEst: \$225 High Est: \$400



Lot #17- Victorian cranberry hall light. Inverted thumbprint pattern with enameled decoration. ca. 1890. 21" t x 6" w. USD LowEst: \$275 High Est: \$375



Lot #18- Victorian pink opalescent hall light. Electrified. 27" t x 11" w. USD LowEst: \$175 High Est: \$300



Lot #23- American Victorian style cranberry hobnail pattern pull down parlor lamp. Matching shade and front. Original brass frame. ca. 1895. 36" t x 16" w. USD LowEst: \$800 High Est: \$1400



Lot #24- American Victorian style pull down parlor lamp with floral decorated shade. ca. 1895. 30" t x 14" w. USD LowEst: \$325 High Est: \$500



Lot #25- French Provincial three arm, wrought iron light fixture. ca. 1920. 24" t x 21" w. USD LowEst: \$125 High Est: \$250



Lot #26 - French Provincial style, four arm, wrought iron & tin light fixture. ca. 1900. 21" t x 30" w 1900. 30" w x 22" t. USD LowEst: \$150 High Est: \$275



Lot #31- French Provincial style, five arm, wrought iron light fixture. ca. 1920. 18" t x 23" w. USD LowEst: \$125 High Est: \$275



Lot #32 - Spanish colonial style wrought iron light fixture. ca. 1900. 14" t x 18" w USD LowEst: \$75 High Est: \$300



Lot #27 - Colonial style, eight arm, iron and bronze chandelier with rosettes mounted on the sides. ca. 1920. 27" w x 22" USD LowEst: \$275 High Est: \$550



Lot #28 - French Provincial style, four arm, wrought iron light fixture with floral rose decoration. ca. 1910. 18" t x 21" w USD LowEst: \$125 High Est: \$275



Lot #33 - Colonial style, wrought iron, five arm, light fixture. ca. 1910. 28" t x 26" w. USD LowEst: \$150 High Est: \$275



Lot #34 - French Louis XVI style bronze, fourteen arm chandelier. ca. 1910. 28" t x 36" w. USD LowEst: \$275 High Est: \$450



Lot #29- French Provincial style, four arm, wrought iron fixture with leaf design on arm. ca. 1910. 21" t x 27" w. USD LowEst: \$175 High Est: \$325



Lot #30- Pair of Provincial style bracket lights. Wrought iron and tin design with etched glass panels. ca. 1920. 25" t x 12" d x 8" w. USD LowEst: \$225 High Est: \$400



Lot #35- Victorian style commercial brass fixture with embossed globe. 32" t x 23" w. USD LowEst: \$225 High Est: \$400



Lot #36- French Louis XIV style bronze and crystal, 15 arm chandelier. ca. 1910. 36" t x 35" w. USD LowEst: \$750 High Est: \$950



Lot #37- Victorian style, six arm, brass chandelier. Three arms up, three arms down with center globe. ca. 1900. 36" x 29" USD LowEst: \$650 High Est: \$900



Lot #38 - Victorian style 6 arm fancy brass chandelier. Three arms up and three arms down with center globe. ca. 1900. USD LowEst: \$500 High Est: \$750



Lot #43- Landscape oil on canvas by H.E. Williams. Framed. Signed lower left. ca. 1888. 18" x 12" USD LowEst: \$400 High Est: \$750



Lot #44 - WWI Original Lucian Lantier watercolor trench warfare. Private family collection for over 60 years. ca. Nov.-Dec 1915. 8" x 8". USD LowEst: \$1800 High Est: \$3000



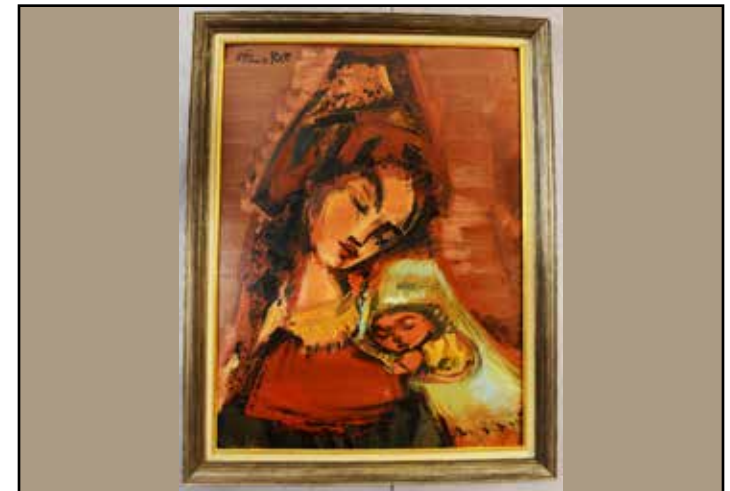
Lot #39 - Rare aesthetic movement gas and electric chandelier. Six decorated arms. Three electric heading down and three gas going up. ca. 1890. 43" t x 31" w USD LowEst: \$2400 High Est: \$3600



Lot #40 - French Louis XV style fancy bronze, six arm, chandelier. Leaf decorated center with six gargoyles. ca. 1900. 24" t x 28" w USD LowEst: \$1800 High Est: \$2400



Lot #45 - "Along Mnt. Conway", North Wales, oil on canvas by J.T. Hughes. Framed. ca. 1900. 18" x 10". USD LowEst: \$275 High Est: \$450



Lot #46 -E. Tienne Ret, mother and child, oil on board. Signed upper left. 31" x 24" USD LowEst: \$400 High Est: \$650



Lot #41- Mexico Valley Landscape attributed to José M. Velasco 1894. Oil on Canvase. Original gilted frame. Signed and Dated on lower left. 37"H x 53"W. USD LowEst: \$30,000 High Est: \$100,000



Lot #42- Equestrian oil on canvas by W. Grechow. Signed lower left. Giltwood frame. ca. 1960. 36" x 24". USD LowEst: \$225 High Est: \$400



Lot #47- Pair of French art glass sconces. Art deco style. Rose floral design. Pink satin glass with bronze mounts. France. ca. 1920. 10" t x 10" w USD LowEst: \$650 High Est: \$900



Lot #48- Pair of French art glass sconces. Art deo style. Pink satin glass. Bronze mount. France. ca. 1920. 10" t x 6" w USD LowEst: \$650 High Est: \$900



Lot #49- French Louis XV bronze, two arm sconce with matching etched shades. 15" t x 17" w
USD LowEst: \$225 High Est: \$400



Lot #50 - French Louis XV bronze, two arm sconce with matching etched shades. 15" t x 17" w
USD LowEst: \$225 High Est: \$400



Lot #55- French Louis XIV style bronze, ten arm, light fixture with silk and beaded trim. ca. 1910. 26" x 26"
USD LowEst: \$450 High Est: \$700



Lot #56 - French art nouveau style bronze chandelier with six etched panels. ca. 1910. 24" t x 21" w
USD LowEst: \$475 High Est: \$750



Lot #51 - Pair of French Louis XVI style bronze sconces. ca. 1910. 14" t x 11" w x 14" d
USD LowEst: \$325 High Est: \$475



Lot #52 - Great Victorian bronze gargoyle sconce. ca. 1900. 23" t x 14" w
USD LowEst: \$800 High Est: \$1200



Lot #57 - Fabulous Grand Victorian Bronze, 14 light, chandelier with floral and leaf decorated frame. Decorated arms. ca. 1890. 43" t x 41" w
USD LowEst: \$3200 High Est: \$4500



Lot #58 - French Louis XIV style fancy bronze chandelier. Leaf and Floral Motif with lions supporting four arms with satin glass shades. ca. 1900. 41" t x 33" w.
USD LowEst: \$2100 High Est: \$3600



Lot #53- French Louis XV style, bronze and alabaster, nine arm chandelier. ca. 1910. 28" x 28"
USD LowEst: \$650 High Est: \$900



Lot #54- French Louis XIV style bronze, eight arm, chandelier. Heavy bronze casting. ca. 1890. 34" t x 28" w
USD LowEst: \$900 High Est: \$1400



Lot #59- Turn of the century style general store showcase with curved glass front and arched top. ca. 1900. 44" t x 27" d x 48" w. USD LowEst: \$650 High Est: \$900



Lot #60- Unusual turn of the century style oak general store curved glass showcase. Manufactured by H. Paulk & Sons. St. Louis, MO. ca. 1900. 36" t x 60" w x 28" d.
USD LowEst: \$900 High Est: \$1400



Lot #61- Turn of the century French bronze showcase. ca. 1900. 66" t x 27" d x 53" w.
USD LowEst: \$400 High Est: \$600



Lot #62 -Art deco style walnut curved glass showcase. Lighted with sliding walnut doors. Adjustable shelf. ca. 1920. 41' t x 22" d x 72" w. USD LowEst: \$475 High Est: \$650



Lot #67- Turn of the century walnut showcase. Three drop doors in back. ca. 1900. 13" t x 27" d x 74" w.
USD LowEst: \$225 High Est: \$350



Lot #68 - General store oak showcase. Sliding doors in back. ca. 1900. 17" t x 29" d x 67" w.
USD LowEst: \$250 High Est: \$400



Lot #63 - Art deco style jewelry store showcase. Curved fronts with doors and drawers. Mahogany construction. ca. 1920. 42" t x 9" L x 24" d. Two matching curved front units.
USD LowEst: \$2400 High Est: \$3600



Lot #64 - Art Deco style jewelry store mahogany showcase with drawers and doors in back. ca. 1920. 42" t x 8'6" L x 29" d
USD LowEst: \$600 High Est: \$900



Lot #69 - French Provincial style wrought iron, five arm, light fixture. ca. 1920. 20" t x 23" w.
USD LowEst: \$175 High Est: \$300



Lot #70 -French Provincial style, four arm, wrought iron light fixture. ca. 1920. 20" t x 24" w.
USD LowEst: \$175 High Est: \$275



Lot #65- Art Deco style jewelry store mahogany showcase with drawers and doors in back. ca. 1920. 42" t x 8'6" L x 29" d
USD LowEst: \$600 High Est: \$900



Lot #66- Turn of the century slant front showcase. John Becker marked. Three drop drawers in back. 9 Howard Street, N.Y. ca. 1890. 13" t x 27" d x 72" w.
LowEst: \$250 High Est: \$400



Lot #71- French Provincial style, five arm, wrought iron light fixture. ca. 1920. 18" t x 19" w.
USD LowEst: \$175 High Est: \$350



Lot #72- French Louis XIV style bronze & crystal, eight light chandelier. ca. 1920. 25" t x 13" w.
USD LowEst: \$375 High Est: \$600



Lot #73-French art deco style bronze six light chandelier. ca. 1920. 46" t x 24" w.
USD LowEst: \$1800 High Est: \$2400



Lot #74 -Antique Victorian style seven arm brass chandelier. Embossed center. Fancy arm supports. Green curved glass shades. Original Fixture. ca. 1900. 40" t x 46" w 41" t x 22" d x 72" w. USD LowEst: \$800 High Est: \$1200



Lot #79- French Provincial style wrought iron, four arm, light fixture. ca. 1920. 19" t x 20" w.
USD LowEst: \$125 High Est: \$250



Lot #80 - Elegant French Louis style figural bronze chandelier. Twelve lights in total. ca. 1900. 48" t x 24" w.
USD LowEst: \$2800 High Est: \$3600



Lot #75 - Victorian style three arm brass light fixture with three glass ball shades. ca. 1905. 28" t x 17" w.
USD LowEst: \$250 High Est: \$400



Lot #76 - Victorian style, four arm, brass light fixture with lions holding four cut glass globes. ca. 1905. 12" t x 21" w.
USD LowEst: \$275 High Est: \$450



Lot #81 - French gothic style bronze and alabaster, six arm, chandelier. Floral and leaf decoration in center column and arms. ca. 1910. 36" t x 30".
USD LowEst: \$800 High Est: \$1200



Lot #82 -French Louis XV style bronze chandelier with Greek God "Bacchus" holding shades. ca. 1900. 25" t x 30" w. USD LowEst: \$1800 High Est: \$2400



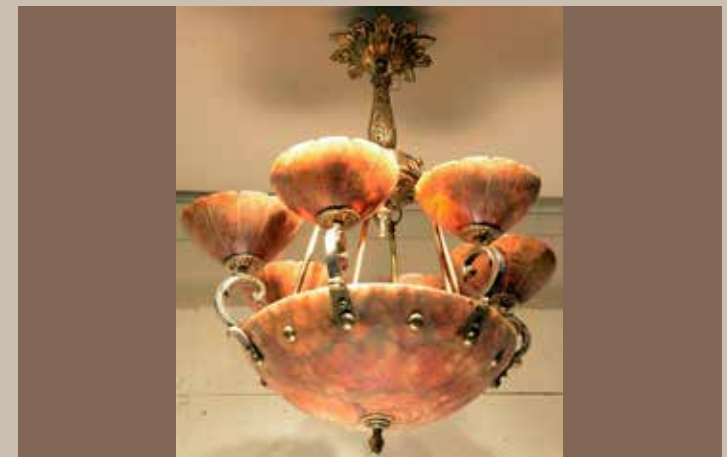
Lot #77- French Louis XVI style bronze and alabaster chandelier with ribbon decoration top holding fancy alabaster center globe. ca. 1905. 20" t x 14" w.
USD LowEst: \$650 High Est: \$900
www.bruhnsauction.com



Lot #78- Ten arm Provincial style wrought iron chandelier. ca. 1920. 44" t x 36" w.
LowEst: \$250 High Est: \$400



Lot #83- French Louis XV style, six arm, bronze chandelier. Ribbed center with filigree arms. ca. 1920. 19" t x 23" w. USD LowEst: \$800 High Est: \$1200



Lot #84- French art deco style bronze and red alabaster chandelier with six arms extending up from center globe. ca. 1910. 26" t x 24" w.
USD LowEst: \$1600 High Est: \$2400



Lot #85-French Louis XVI style bronze and crystal chandelier. 16 arms heavily decorated with crystal center column. ca. 1910. 48" t x 36" w USD LowEst: \$3600 High Est: \$4500



Lot #86 -French Louis XV style bronze chandelier. Eight lights with leaf and floral design. ca. 1900. 47" t x 41" w. USD LowEst: \$3800 High Est: \$4600



Lot #91- French Louis style bronze, two arm, sconce. ca. 1910. 21" t x 17" w. USD LowEst: \$250 High Est: \$375



Lot #92 - Pair of French Louis XV style bronze, three arm, sconces. ca. 1920. 20" t x 14" w. USD LowEst: \$150 High Est: \$275



Lot #87 - French Louis XV style bronze, twelve arm, chandelier. Heavily decorated with massived shaped arms. ca. 1900. 33" t x 35" w. USD LowEst: \$2800 High Est: \$3600



Lot #88 - French Louis XIV style, bronze and alabaster, three light sconce with the bust of venus mounted in the center of sconce. ca. 1900. 22" t x 22" w. USD LowEst: \$1400 High Est: \$2400



Lot #93 - Pair of French Louis XV bronze sconces. Single arm. ca. 1900. 10" t. USD LowEst: \$125 High Est: \$250



Lot #94 -French Louis XVI bronze, two arm, sconce. ca. 1910. 16" t x 12" w. USD LowEst: \$100 High Est: \$175



Lot #89- French Louis XIV style, bronze and alabaster, three light sconce with the bust of venus mounted in the center of sconce. ca. 1900. 22" t x 22" w. USD LowEst: \$1400 High Est: \$2400
www.bruhnsauction.com



Lot #90-French Louis XV style bronze, ten arm, sconce. Electrified. 20" t x 21" w. LowEst: \$250 High Est: \$375



Lot #95- French Louis XIV bronze, three arm, sconce with two up and one down. ca. 1910. 21" t x 20". USD LowEst: \$275 High Est: \$450



Lot #96- 1920's French two arm bronze sconce. ca. 1920. 10" x 12". USD LowEst: \$75 High Est: \$125



Lot #97-French Louis XVI style sconce. ca. 1910. 12" t x 5" w. USD LowEst: \$50 High Est: \$100



Lot #98 -Rare and elegant Victorian, sixteen arm, gas and electric chandelier with twelve gas and four electric arms. ca. 1890. 32" t x 32" w. USD LowEst: \$2800 High Est: \$3600



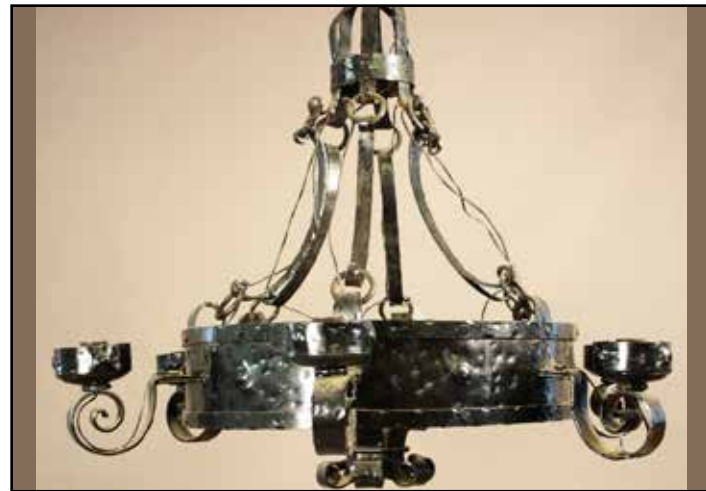
Lot #103- Landscape oil on canvas by Andrea. Framed. 36" x 24". USD LowEst: \$400 High Est: \$650



Lot #104 - Seascape oil on canvas by Kontny. Signed lower left. 36" x 24". USD LowEst: \$350 High Est: \$600



Lot #99 - Unusual arts and crafts style, gas and electric, hanging dome fixture with slag glass panels. ca. 1910. 45" t x 19" w. USD LowEst: \$450 High Est: \$700



Lot #100 - French Provincial style, six arm, wrought iron chandelier. ca. 1915. 32" t x 36" w. USD LowEst: \$225 High Est: \$450



Lot #105 - Heinz-Stoecker seascape oil on board. Framed. 32" x 24". USD LowEst: \$275 High Est: \$450



Lot #106 -Joan Arend Kickbush Eskimo child. Untitled. Framed. 11"x 17". USD LowEst: \$200 High Est: \$400



Lot #101- German Black Forest style, six arm, wood light fixture with 13" tall owl mounted in center. ca. 1910. 48" t x 38" w. USD LowEst: \$650 High Est: \$900



Lot #102-Seascape oil on canvas. Unsigned. Framed. ca. 1880. 10" x 15". LowEst: \$200 High Est: \$400



Lot #107- Clock tower painting on tin with functioning clock. Mother of pearl inlaid. Unsigned. Framed. 14" x 20". USD LowEst: \$250 High Est: \$450



Lot #108- Heinz-Stoecker seascape of sailing ship. Oil on Canvas. Signed lower right. Framed. 24" x 36". USD LowEst: \$350 High Est: \$600



Lot #109-Early Alexandre Jacob atmospheric print. Framed. ca. 1900. 34" x 28".
USD LowEst: \$175 High Est: \$350



Lot #110 -Peter Noel "Yellow Roses" oil on canvase. Signed lower left. Framed. 24" x 20".
USD LowEst: \$275 High Est: \$400



Lot #115- French Louis XIV style bronze and crystal sixteen arm chandelier. ca. 1910. 34" t x 31" w.
USD LowEst: \$800 High Est: \$1200



Lot #116 - French Louis XVII style bronze and alabaster chandelier. Six arms. ca. 1920. 20" t x 28" w.
USD LowEst: \$475 High Est: \$650



Lot #111 - Charles Mulvey water color on paper. Wrecked ships. Framed. 21" x 14". USD LowEst: \$200 High Est: \$400



Lot #112 - Victorian style aesthetic movement, five arm, chandelier. Bronze and crystal with etched shades. Electrified. 35" t x 40" w.
USD LowEst: \$2400 High Est: \$3600



Lot #117 - French Louis XV style bronze and alabaster chandelier. ca. 1910. 24" t x 28" w.
USD LowEst: \$650 High Est: \$800



Lot #118 -French Provincial style wrought iron light fixture. Sixteen arm. ca. 1920. 26" t x 32" w.
USD LowEst: \$250 High Est: \$400



Lot #113- French Louis XV style bronze, seven light, chandelier. Floral and leaf decorated on bronze finial. Satin glass and etched shades. ca. 1895. 32" t x 24".
USD LowEst: \$1800 High Est: \$2400
www.bruhnsauction.com



Lot #114-French Louis XVI figural chandelier. Ribbon and bow decoration with cherub sitting in the middle on four pink satin glass shades. ca. 1900. 28" t x 23" w.
LowEst: \$800 High Est: \$1200



Lot #119- Provincial style wrought iron light fixture. Four arm. ca. 1920. 36" t x 27" w.
USD LowEst: \$175 High Est: \$300
www.bruhnsauction.com



Lot #120- Provincial Style wrought iron light fixture. Six arm. ca. 1920. 27" t x 28" w.
USD LowEst: \$175 High Est: \$300



Lot #121-Dutch Provincial style bronze chandelier with four cherubs in center. Fifteen arm. ca. 1920. 26" t x 34" w. USD LowEst: \$375 High Est: \$600



Lot #122 -German oak wooden, six arm, light fixture with carved center column and arms. ca. 1900. 25" t x 24" w. USD LowEst: \$225 High Est: \$450



Lot #127- French Provincial style wrought iron, six panel, light fixture. ca. 1920. 21" t x 17". USD LowEst: \$350 High Est: \$500



Lot #128 - French Provincial style wrought iron and tin light fixture. 28" t x 13". USD LowEst: \$100 High Est: \$250



Lot #123 - Provincial style wrought iron and tin, three arm, light fixture. ca. 1940. 24" t x 18" w. USD LowEst: \$125 High Est: \$275



Lot #124 - French Provincial style wrought iron and tin ceiling fixture. 27" x 12" w. USD LowEst: \$100 High Est: \$250



Lot #129 - Dutch style gilt wood barley twist chandelier. ca. 1910. 25" t x 30" w. USD LowEst: \$225 High Est: \$450



Lot #130 -French Provincial style wrought iron, six panel, light fixture. ca. 1910. 21" t x 18" w. USD LowEst: \$325 High Est: \$450



Lot #125- French Provincial style wrought iron and tin hall light. ca. 1930. 22" t x 13" w. USD LowEst: \$100 High Est: \$250



Lot #126-French Provincial wrought iron and tin fixture. 28" t x 13" w. LowEst: \$100 High Est: \$250



Lot #131- Pair of French Louis XVII bronze torcher lamps with fluted columns. Cherub faces decorating claw footed base. ca. 1900. 100" t x 21" w. USD LowEst: \$3500 High Est: \$5000
www.bruhnsauction.com



Lot #132- Victorian walnut three door bookcase with full columns in center. ca. 1890. 8't x 29" d x 110" w. USD LowEst: \$500 High Est: \$900



Lot #133-Unusual Victorian walnut two door showcase with beveled glass on all sides. Shows on both sides. ca. 1880. 80" t x 32" w x 48" w. USD LowEst: \$2800 High Est: \$3600



Lot #134 -Turn of the century 60" round oak claw footed dining room table. Quartered oak with seven leaves. ca. 1900. 60" x 30" t. USD LowEst: \$1800 High Est: \$2800



Lot #139- French Louis XV style figural mantel clock. "Manon" spelter figure of a woman by A.J. Scotte. Works signed A.D. Mougin. ca. 1890. 26" t x 16" w USD LowEst: \$425 High Est: \$550



Lot #140 - Ansonia "Olympia" figural mantel clock. Spelter statue of woman holding flowers. Porcelain dial. Time and Strike. Works Signed Ansonia. USD LowEst: \$550 High Est: \$700



Lot #135 - Set of six oak dining chairs. ca. 1905. 39" t x 19" w. USD LowEst: \$200 High Est: \$375



Lot #136 - Turn of the century oak sideboard china cabinet. Heavily decorated on claw feet. ca. 1900. 69" t x 21" d x 52" w. USD LowEst: \$1200 High Est: \$1800



Lot #141 - Ansonia figural mantel clock with spelter statue of woman holding flowers. Porcelain dial. Time and strike. Works signed Ansonia Clock Co. ca. 1890. 23" t x 18" w. USD LowEst: \$475 High Est: \$650



Lot #142 -Ansonia figural statue of woman playing flute. Porcelain dial. Open escapement. Time and strike. ca. 1890. 15" t x 16" w. USD LowEst: \$375 High Est: \$490



Lot #137- Set of 3--4 drawer oak filing cabinets. 2 letter size, 1 legal. Paneled on all sides. Signed Library Bureau Sole Makers. Ca. 1910. 52" t x 27" d x 53"w. USD LowEst: \$200 High Est: \$400
www.bruhnsauction.com



Lot #138-French style double sink with granite top. 42" t x 23" d x 72" L LowEst: \$250 High Est: \$500



Lot #143- Italian Baroque cartel mantel clock. Bronze and Burlwood case. Bronze and porcelain dial. Time and 2 ball strike movement. Signed Germany works. ca. 1960. 21" t x 7" w. USD LowEst: \$375 High Est: \$550
www.bruhnsauction.com



Lot #144- New Haven crystal regulator with open escapement. Porcelain dial. Beveled glass on all sides. ca. 1900. 10" x 6. USD LowEst: \$275 High Est: \$400



Lot #145-French Louis XVII style portico mantel clock. Time and strike. Works signed Japy Frères. ca. 1870. 18" t x 9" w 80" t x 32" w x 48" w.
USD LowEst: \$475 High Est: \$650



Lot #146 -French Louis XVII style bronze mantel clock. Porcelain numerals with bronze dial. Time and strike. ca. 1880. 13" t x 7" w. USD LowEst: \$375 High Est: \$550



Lot #151- Gustav Becker German R.A. Regulator in walnut case. Porcelain dial. Signed GB movement. ca. 1890. 39" t x 15" w. USD LowEst: \$525 High Est: \$750



Lot #152 - French triple function walnut wall clock with thermometer, barometer, and clock. Porcelain numerals. Time and strike. ca. 1880. 36" t x 17" w.
USD LowEst: \$425 High Est: \$650



Lot #147 - French Louis XVI style figural mantel clock. Seated woman holding flowers. Bronze patina on spelter. Signed Japy Frères movement. Time & strike. ca. 1880. 22" t x 13" w. USD LowEst: \$375 High Est: \$500



Lot #148 - French Louis XIV style bronze mantel clock. Heavily decorated with gargoyles on the sides and standing lion on shield in center. Porcelain dial. Time & strike. Japy Frères movement. ca.1895. 23" t x 14" w.
USD LowEst: \$325 High Est: \$500



Lot #153 - French vineyard clock with mother of pearl, brass and inlay, porcelain dial. Signed. Time and Strike. ca. 1880. 25" x 20"
USD LowEst: \$275 High Est: \$450



Lot #154 -French art deco style Westminster chime regulator wall clock. Oak case. Original signed dial. ca. 1925. 25" t x 13" w.
USD LowEst: \$225 High Est: \$375



Lot #149- French Louis XV style doré bronze figural mantel clock. Harvest time. Porcelain dial. Time and strike. Works signed Japy Frères. ca 1880. 17" t x 15" w.
USD LowEst: \$425 High Est: \$650
www.bruhnsauction.com



Lot #150-Gustav Becker German free swinger wall clock. Oak case. Time and strike with fancy pendulum. Signed GB gold medal. ca. 1895. 32" t x 17" w.
LowEst: \$375 High Est: \$550



Lot #155- Vienna R.A. Regulator clock with porcelain dial. Time and Strike. Possible Lenzkirch. Movement not signed. ca. 1865. 34" t x 18" w. USD LowEst: \$400 High Est: \$700



Lot #156- Early Kienzle walnut clock. Fancy decorated brass dial and face. Time and strike. Very early. s/n 81,885. ca. 1860. 34" t x 20" w. USD LowEst: \$725 High Est: \$950



Lot #157-Vienna R.A. Regulator second Baroque style, triple weight walnut clock. Porcelain dial. ca. 1875. 50" t x 16" w. USD LowEst: \$950 High Est: \$1400



Lot #158 -German art deco style, Westminster chime wall clock. Mahogany case with curved and beveled glass door. Triple wind. ca. 1920. 33" t x 14" w. USD LowEst: \$200 High Est: \$350



Lot #163- French Louis XVI style entryway mirror, with ribbon carved crest. Four mirrors and two umbrella/cane holders. ca 1900. 98" t x 72" w. USD LowEst: \$1200 High Est: \$1800



Lot #163a - French Louis XV style giltwood trumeau mirror with shell carved crest. Leaf and floral design. ca. 1890. 89" t x 56". USD LowEst: \$1800 High Est: \$2400



Lot #159 - Italian Baroque style bronze ewer with rams head on front. ca. 1900. 18" t x 8" w. USD LowEst: \$350 High Est: \$500



Lot #160 - French Holosteric barometer. Signed PHBN. ca. 1920. 5" d. USD LowEst: \$100 High Est: \$179



Lot #164 - American Renaissance revival walnut princess dresser with carved crest, burlled panels, candle shelves on side of mirror, full marble top with rounded corners. 2 drawers in base with carved pulls. Philadelphia ca. 1875. 83" t x 23" d x 44" w. USD LowEst: \$800 High Est: \$1200



Lot #165 -French Louis XV Style Horner Bros Mahogany Vanity. Oval mirror. Bombay sides. Att. To J & J Horner. NY. Ca. 1900. 70" t x 23" d x 52" w. USD LowEst: \$800 High Est: \$1200



Lot #161- Italian Renaissance revival style figural hall mirror with blackamoor figures on sides. 90" t x 77" w. USD LowEst: \$2400 High Est: \$3600



Lot #162-French Louis XVI style walnut pier mirror with floral basket carved in crest. ca. 1890. 88" t x 44" w. LowEst: \$625 High Est: \$850



Lot #166- French Louis XV Style Horner Bros Mahogany tall chest. 8 drawers serpentine front. Attributed to J & J Horner NY. Ca. 1900. 79" t x 24" d x 49" w. USD LowEst: \$800 High Est: \$1200
www.bruhnsauction.com



Lot #167- French Louis XV Style Horner Bros. Mahogany Dresser with oval beveled mirror Attributed to J & J Horner N.Y. Ca. 1900. 83" t x 27" d x 59" w. USD LowEst: \$800 High Est: \$1200



Lot #168-French Louis XVI Style Sideboard. Marble top, curio cabinet on top of salmon marble top base. Circa 1885. 83" t x 20" d 59" w. USD LowEst: \$1200 High Est: \$1600



Lot #169 -French Louis XV style bronze hall light with beveled glass on all sides. ca. 1900. 28" t x 14" w. USD LowEst: \$650 High Est: \$900



Lot #174- Italian figural statue of two girls at the beach. White carrera marble. ca. 1900. 47" t x 25" w. USD LowEst: \$1800 High Est: \$2400



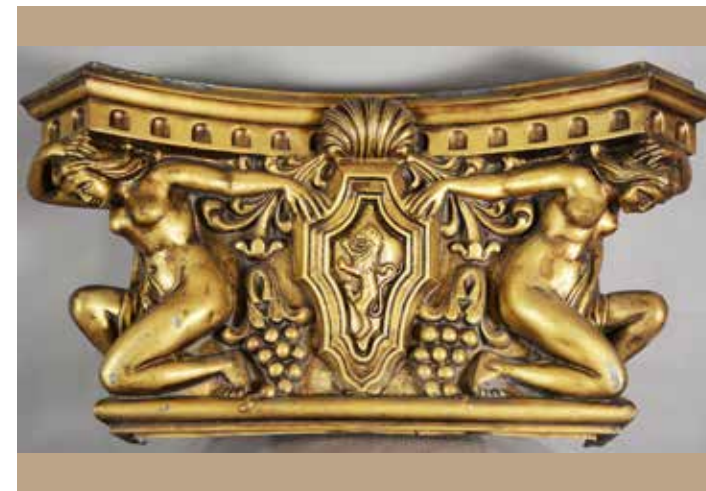
Lot #175 - Italian marble bust of a woman. ca. 1900. 14" t x 10" w. USD LowEst: \$450 High Est: \$675



Lot #170 - Victorian style bronze and crystal, five arm, chandelier. 56" t x 25" w. USD LowEst: \$500 High Est: \$800



Lot #171 - French style bronze sconce with decorated 4" shade. ca. 1910. 8" t x 7" w. USD LowEst: \$75 High Est: \$150



Lot #176 - French art nouveau style gilted frieze with kneeling nude women. Gilt on tin. ca. 1920. 10" t x 36" w. USD LowEst: \$475 High Est: \$700



Lot #177 -Pair of early Chinese cloisonne vases. Floral decorated-lotus flower. ca. 1890. 8" t x 5" w. USD LowEst: \$800 High Est: \$1200



Lot #172- Early American colonial lantern. ca. 1877. 32" t x 10" w. USD LowEst: \$125 High Est: \$250



Lot #173- Italian Renaissance revival style carrera marble garden table. Round cantas leaves carved top, fluted center column on three claw feet. ca. 1890. 36" t x 24" w. LowEst: \$750 High Est: \$900



Lot #178- Pair of early Chinese cloisonne vases. Tea pot and flower design in center. ca. 1890. 7" t x 4" w. USD LowEst: \$800 High Est: \$1200



Lot #179- Early Oriental bronze dish with dragons, centipedes and fish. ca. 1870. 10" d. USD LowEst: \$325 High Est: \$650



Lot #180-Chinese hard stone carving of flowers and fish. ca. 1930. 8" t x 5" w. USD LowEst: \$125 High Est: \$250



Lot #181 -Oriental style porcelain vase. 11" t
USD LowEst: \$50 High Est: \$100



Lot #186- Two original painting on silk of flowers, bees, and insects. Framed. Signed on bottom. ca. 1920. 19" x 36"
USD LowEst: \$175 High Est: \$350



Lot #187 - Chinese and Oriental scrolls with approximately 23 various subject matters and sizes. ca. 1880-1930. USD LowEst: \$150 High Est: \$500



Lot #182 - Pair of Chinese cloisonne vases. ca. 1900. 10" t
USD LowEst: \$225 High Est: \$400



Lot #183 - Rose medallion 16 piece partial tea set. Tea pot, sugar, bowls, plates. Some flakes. ca. 1900
USD LowEst: \$175 High Est: \$300



Lot #188 - Chinese wood trunk. Hand decorated. Brass handles on sides. Lock in front. ca. 1920.
31" L x 20" d x 9" t. USD LowEst: \$100 High Est: \$175



Lot #189 -Sterling silver embossed flip top filigreed cigarette box. Sterling 0.925 approx. weight 66.5 grams, Mexico. ca. 1920. USD LowEst: \$125 High Est: \$275



Lot #184- Chinese six panel folding screen with scenic hard stone carved panels. 72" x 72".
USD LowEst: \$250 High Est: \$400



Lot #185- Antique Chinese style bronze and cloisonne, two handle, bowl. Signed on bottom. 3 1/2" x 8"
USD LowEst: \$100 High Est: \$250



Lot #190- Sterling silver decorated playing card box. Sterling 0.925. Approx. weight 77.8 grams. USA.
USD LowEst: \$125 High Est: \$275



Lot #191- Sterling silver art deco style, side opening cigarette case. Hallmark. Sterling 0.925. Approx. weight. 97.6 grams. English. USD LowEst: \$125 High Est: \$275



Lot #192-Sterling Silver decorated cigarette box. Center slide open case. Sterling 0.925. Approx. weight 80.7 grams. USA. USD LowEst: \$125 High Est: \$275



Lot #193 -French art deco style sterling silver cigarette case. Open filigree with leaf and floral decoration. Sterling 0.925. Approx. weight 99.5. French. USD LowEst: \$150 High Est: \$325



Lot #198- Sterling silver art deco style cigarret box. Side open case. Sterling 0.925. Approx. weight 83.6 grams. English. USD LowEst: \$125 High Est: \$250



Lot #199 - S. Kirk & Sons sterling silver floral embossed match box. Signed S. Kirk & Sons. Sterling. ca. 1900. Approx. weight 18.8 grams. USA. USD LowEst: \$100 High Est: \$175



Lot #194 - Enameled cigarette box. Approx. weight 80.6 grams. Japanese. USD LowEst: \$125 High Est: \$250



Lot #195 - Sterling silver art deco style cigarette box. Side open case. Sterling 0.925. Approx. weight 114.2 grams. English. USD LowEst: \$125 High Est: \$250



Lot #200 - Sterling silver embossed hinged top pill box. Approx. weight 19.9 grams. Denmark. USD LowEst: \$40 High Est: \$90



Lot #201 -Sterling silver locket with cross. Sterling 0.925. Approx. weight 6.1 grams. USA. USD LowEst: \$50 High Est: \$100



Lot #196- Sterling silver art deco style cigarette box. Side open case. Sterling 0.925. Approx. weight 65.2 grams. English. USD LowEst: \$125 High Est: \$250



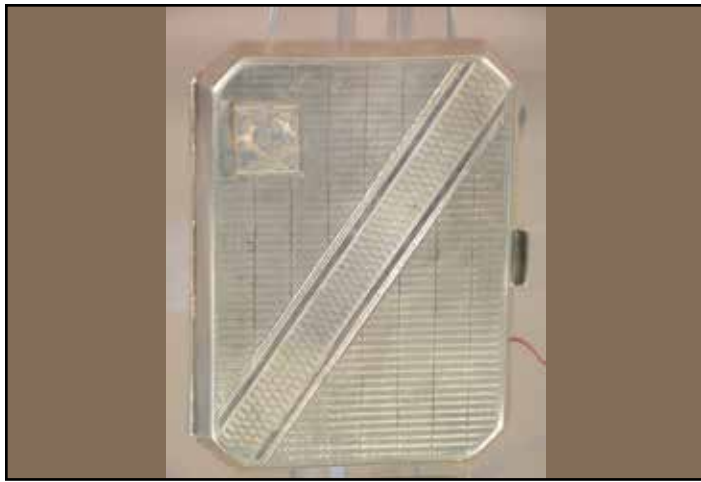
Lot #197- Sterling silver art deco style cigarette box. Side open case. Sterling 0.925. Approx. weight 79.9 grams. English. USD LowEst: \$125 High Est: \$250



Lot #202- Sterling silver child's bubble loop. Approx. weight 31.5 grams. English. USD LowEst: \$125 High Est: \$250



Lot #203- Sterling silver baby wristband. Sterling 0.925. Approx. weight 11.7 grams. USA. USD LowEst: \$100 High Est: \$175



Lot #204-Sterling silver art deco style cigarette box. Side open case. Sterling 0.925. Approx. weight 81.6 grams. English USD LowEst: \$125 High Est: \$250



Lot #205 -Oriental style blue stone & sterling silver snuff bottle. Approx. weight 26.3 grams. Japanese. USD LowEst: \$150 High Est: \$300



Lot #210- Unusual French art nouveau style oak back bar with stain glass. ca. 1910. Oak back bar 103" t x 22' L. Front bar 195" L. USD LowEst: \$4500 High Est: \$7500



Lot #211 - Turn of the century mahogany showcase with sliding glass doors, curved glass, side supports. ca. 1910. 8' ta x 14'4" L USD LowEst: \$800 High Est: \$1400



Lot #206 - Sterling silver cigarette case. Side open case. Sterling 0.925. Approx. weight 76.3. English. USD LowEst: \$100 High Est: \$250



Lot #207 - Sterling silver hinged top snuff box. Approx. weight 73.4 grams. English USD LowEst: \$125 High Est: \$275



Lot #212 - 1920's Soda Fountain Back Bar with mirrored back, glass shelves in top & center cabinet, sliding glass door in base. Mahogany Made by the Colorado Furniture Co. Denver, Colorado. 96" t x 18' 8" w x 30" d. Ca. 1920 USD LowEst: \$1800 High Est: \$2600



Lot #213 -1920's Showcase with Sliding Doors. The Colorado Furniture Company Showcase with triple glass shelves with sliding doors. 42" t x 72" w x 26" d. Ca. 1920 USD LowEst: \$300 High Est: \$500



Lot #208- Sterling silver art deco cigarette box. Side open case. Sterling 0.925. Approx weight 50.3 grams. English USD LowEst: \$100 High Est: \$250



Lot #209- Silver and amber color stone cigarette case. Approx weight 75.2. USA USD LowEst: \$100 High Est: \$250



Lot #214- Two antique pine doors with etched glass panels. ca. 1910. 89" x 54" USD LowEst: \$100 High Est: \$250



Lot #215- Pair of art nouveau style beveled glass doors. 80" x 36" USD LowEst: \$800 High Est: \$1200



Lot #216-Early Chinese carved panes. Pine. ca. 1880. 60” t x 20” w
USD LowEst: \$350 High Est: \$500



Lot #217 - ‘The Godfather’ movie poster. Anonymous, Original Italian version. Framed. ca. 1970. 54” t x 38” w
USD LowEst: \$800 High Est: \$1200



Lot #223- Landscape oil on canvas. Unsigned. Fancy frame. ca. 1890. 21” x 35”
USD LowEst: \$650 High Est: \$900



Lot #224 - Landscape oil on board. Artist signed. H.O. Williams. ca. 1940. 28” x 22”
USD LowEst: \$175 High Est: \$350



Lot #218 - “Beatles Yellow Submarine” Original Italian version. Framed. 55” t x 35” w
USD LowEst: \$700 High Est: \$1100



Lot #219 - “Roustabout” 1960 Elvis Presley movie poster. ca. 1960. 26” x 20”.
USD LowEst: \$200 High Est: \$375



Lot #225 - Village scene oil on canvas. E. Henderson. Artist signed. Framed. 36” x 24”
USD LowEst: \$350 High Est: \$600



Lot #226 -The Wine Tester. Oil on canvas. Unsigned. Framed 5” x 7”
USD LowEst: \$175 High Est: \$300



Lot #220- Daude Pianos French poster. France. ca. 1920. 61” x 45”.
USD LowEst: \$300 High Est: \$600



Lot #221- German Poster. Zurich. ca. 1925. 50” x 35”
USD LowEst: \$150 High Est: \$400



Lot #227- Bernard Lorjou print. 71/129. Framed. 27” x 17”
USD LowEst: \$100 High Est: \$175



Lot #228- Fishing port. Copyright 1905 London & Washington. Burlington proof. ca. 1906. Framed. 28” x 35”
USD LowEst: \$100 High Est: \$250



Lot #229-Sioux mourning rider print by Oscar Howe. ca. 1969. Matted and framed. 18" x 22"
USD LowEst: \$100 High Est: \$250



Lot #230 - Mythical flight print by Oscar Howe. ca. 1975. 20" x 15". USD LowEst: \$250 High Est: \$350



Lot #235- Ducks oil on board. Unsigned. 6" x 4"
USD LowEst: \$150 High Est: \$275



Lot #236 - Fernandee Doblas Malaga Semana Santa poster. ca. 1972. 16" x 11". USD LowEst: \$100 High Est: \$175



Lot #231 - Museu Calouste Gulbenkian poster. Framed. Japan. 38" x 25". USD LowEst: \$100 High Est: \$175



Lot #232 - Hay sled. Blue river. Serigraph by Jack Dale. 1/7. ca. 1960. 21" x 27". USD LowEst: \$100 High Est: \$175



Lot #237 -Elephant art. Artist Wanpen 17" x 26"
USD LowEst: \$200 High Est: \$400



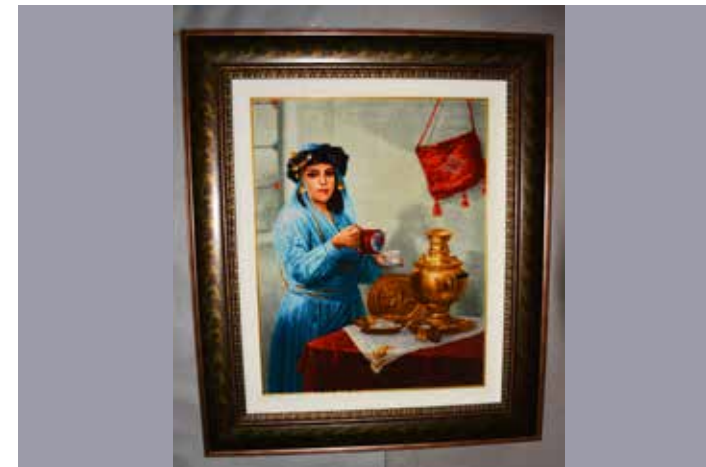
Lot #238 -Art deco elegance 1. Signed Shields 1983. 22" x 28". USD LowEst: \$100 High Est: \$175



Lot #233-Signed Francesco print. ca. 1968. 10" x 27"
USD LowEst: \$50 High Est: \$100



Lot #234- Landscape oil on board. Unsigned. Framed. 10" x 8". USD LowEst: \$150 High Est: \$275



Lot #239- Persian style silk rug. Iranian woman serving tea. Hand tied. ca. 1950. 34" x 27".
USD LowEst: \$800 High Est: \$1400



Lot #240- Persian style wool carpet. 11' x 8'
USD LowEst: \$350 High Est: \$600



Lot #241-Tribal style wool carpet. 10' x 7'
USD LowEst: \$200 High Est: \$450



Lot #242 - Chimayo rug blue. 7' x 4'2"
USD LowEst: \$100 High Est: \$275



Lot #247- Persian style hand tied wool carpet. 72" x 55"
USD LowEst: \$150 High Est: \$325



Lot #248 - Kilim carpet hand tied wool. 11'6" x 81"
USD LowEst: \$375 High Est: \$600



Lot #243 - Chimayo rug red. 7'9" x 4'5"
USD LowEst: \$100 High Est: \$275



Lot #244 - Persian style hand tied wool carpet. 10' x 8'
USD LowEst: \$350 High Est: \$600



Lot #249 -Kilim carpet hand tied wool. 10'8" x 82"
USD LowEst: \$425 High Est: \$650



Lot #250 -Persian style wool carpet hand tied. 81" L x 42" w.
USD LowEst: \$150 High Est: \$325



Lot #245-Persian Style silk carpet. Hand tied. 6'7" x 4'
USD LowEst: \$450 High Est: \$700



Lot #246- Persian style hand tied wool carpet. 70" x 55"
USD LowEst: \$175 High Est: \$300



Lot #251- Persian style wool carpet. Hand tied. 93" x 64".
USD LowEst: \$225 High Est: \$350



Lot #252- French Louis XVI style bronze and onyx pedestal. ca. 1900. 36" x 16".
USD LowEst: \$325 High Est: \$550



Lot #253-French Louis XV style giltwood marble top pedestal. ca. 1900. 50" t x 14" d.
USD LowEst: \$375 High Est: \$600



Lot #254 - Italian Renaissance style marble pedestal. 35" t x 13" d. USD LowEst: \$275 High Est: \$450



Lot #259- 1920's Sheraton style mahogany side table. ca. 1920. 26" t x 21" w. USD LowEst: \$75 High Est: \$150



Lot #260 - Pair of French Louis XV style marble top inlaid side tables. Bombay sides, three marquetry inlaid drawers. Bronze mounts. ca. 1920. 29" t x 11" d x 14" w. USD LowEst: \$375 High Est: \$550



Lot #255 -French Louis XIV style planter. Fancy base with bronze mounts. ca. 1900. 33" t x 25" d.
USD LowEst: \$250 High Est: \$400



Lot #256 - Italian Renaissance style figural bronze and porcelain fountain. 77" t x 33" w.
USD LowEst: \$4000 High Est: \$6500



Lot #261 -Chippendale style mahogany tilt top table. 33" t x 39" d. USD LowEst: \$300 High Est: \$500



Lot #262 -Arts and crafts style oak low table with drawer. 20" t x 21" d x 45" w. USD LowEst: \$125 High Est: \$250



Lot #257-Pair of Renaissance style andirons. 36" t x 21" w.
USD LowEst: \$2500 High Est: \$3600



Lot #258- Pembroke table with banded inlaid top. Drop leaves, bell flower inlaid sides and legs. One drawer. ca. 1920. 29" t x 28" w x 38" L. USD LowEst: \$175 High Est: \$325



Lot #263- Turn of the century desert server with galley. One drawer, double column supports. ca. 1900. 44" t x 18" d x 45" w. USD LowEst: \$275 High Est: \$400



Lot #264- Early Federal style mahogany tilt top candle table. ca. 1830. 29" t x 13" d x 18" w.
USD LowEst: \$175 High Est: \$300



Lot #265-Butchers maple chopping block. ca. 1905. 32" t x 25" w x 34" L. USD LowEst: \$375 High Est: \$500



Lot #266 - 1947 Texas western saddle. ca. 1947 USD LowEst: \$175 High Est: \$350



Lot #271- French Louis XV style, six arm, bronze chandelier. ca. 1900. 36" t x 28" w. USD LowEst: \$800 High Est: \$1200



Lot #272 - Dutch revival style, 10 arm, brass chippendale style chandelier. ca. 1920. 28" t x 35" w. USD LowEst: \$250 High Est: \$400



Lot #267 -Iron hanging hall light with overlay panels. 18" t x 12" d. USD LowEst: \$100 High Est: \$175



Lot #268 -French Louis XVI style bronze chandelier. Grape and leaf design. 12 lights. ca. 1910. 40" t x 26" t. USD LowEst: \$650 High Est: \$900



Lot #273 -Dutch style, 8 arm, bronze chandelier. ca. 1920. 24" t x 28" w. USD LowEst: \$175 High Est: \$350



Lot #274 -American art nouveau style hanging dome. Dome with shaped green slug glass panels. ca. 1910. 14" t x 23" d. USD LowEst: \$175 High Est: \$350



Lot #269-French Louis XIV style, dore bronze, four light hanging fixture with silk shade. ca. 1910. 36" x 24". USD LowEst: \$750 High Est: \$1200



Lot #270- French Louis XV style, 5 arm, bronze and alabaster chandelier. ca. 1910. 20" t x 26" w. USD LowEst: \$550 High Est: \$775



Lot #275- Dutch revival style, six arm, brass chandelier with double eagles on top. ca. 1920. 32" t x 34" w. USD LowEst: \$175 High Est: \$250



Lot #276- Dutch revival style Chippendale, six arm, brass chandelier. ca. 1920. 24" x 30" USD LowEst: \$125 High Est: \$250



Lot #277-Dutch revival style Chippendale, eight arm, chandelier. Silver on brass finish. ca. 1920. 18" x 28".
USD LowEst: \$125 High Est: \$250



Lot #278 - Spanish colonial style, eight arm, wood and iron, spoke wheel chandelier. ca. 1920. 24" t x 45" w.
USD LowEst: \$175 High Est: \$300



Lot #283- Art deco light fixture. Star pattern. ca. 1920. 13" x 16". USD LowEst: \$50 High Est: \$100



Lot #284 - French bronze hall light. 36" x 20"
USD LowEst: \$150 High Est: \$325



Lot #279 French provincial style wrought iron, ten arm, light fixture. ca. 1920. 53" x 41".
USD LowEst: \$450 High Est: \$700



Lot #280 -Dutch revival style Chippendale brass, eight arm, light fixture with double eagle on top. ca. 1920. 24" t x 30" w. USD LowEst: \$175 High Est: \$300



Lot #285 -Contemporary style, six arm, light fixture with center globe. 32" t x 28" w.
USD LowEst: \$100 High Est: \$175



Lot #286 -French provincial style, five arm, light fixture. ca. 1920. 18" x 19". USD LowEst: \$45 High Est: \$150



Lot #281-Biedermeier style Austrian, six arm, chandelier. Marquetry inlaid with bronze finial. ca. 1900. 23' t x 29" w.
USD LowEst: \$175 High Est: \$350



Lot #282- French art nouveau style, four arm, wrought iron, light fixture. ca. 1920. 24" t x 17".
USD LowEst: \$125 High Est: \$250



Lot #287- American country style hanging light fixture. Electrified. ca. 1890. 22" x 10"
USD LowEst: \$50 High Est: \$125



Lot #288-Unusual French provincial style wrought iron light fixture. 24 lights. 67" t x 78" w.
USD LowEst: \$600 High Est: \$900



Lot #289-Unusual French provincial style wrought iron light fixture. 24 lights. 67" t x 78" w.
USD LowEst: \$600 High Est: \$900



Lot #290 - 1920's, five arm, chandelier with art glass shades. ca. 1920. 17" t x 21" w.
USD LowEst: \$250 High Est: \$600



Lot #295- French Louis XV style three cherub chandelier. Reproduction of original. 37" t x 22" w.
USD LowEst: \$150 High Est: \$450



Lot #296 - Spanish colonial style, wrought iron hall light with cut glass panels. ca. 1990's. 32" t x 17" w.
USD LowEst: \$150 High Est: \$300



Lot #291- French Louis XIV style, 13 light, bronze and cut crystal chandelier with floral art glass shade. ca. 1920. 21" t x 24" w. USD LowEst: \$325 High Est: \$600



Lot #292 -Italian Murano style art glass chandelier. Five arms. ca. 1960. 24" t x 26" w.
USD LowEst: \$350 High Est: \$700



Lot #297 -Italian provincial style, eight arm, wood light fixture. ca. 1990. 36" t x 27" w.
USD LowEst: \$150 High Est: \$300



Lot #298 -French provincial style, six arm, light fixture. ca. 1990. 27" t x 22" w. USD LowEst: \$150 High Est: \$300



Lot #293-Italian modern art glass hanging light fixture. Hand blown. 24" t x 25" w.
USD LowEst: \$450 High Est: \$700



Lot #294- Contemporary Italian crystal and chrome chandelier. Eight lights. 42" t x 26" w.
USD LowEst: \$175 High Est: \$350



Lot #299- Italian Baroque style, nine arm, light fixture with six cherubs (some cherubs repaired). ca 1980. 25" t x 26" w.
USD LowEst: \$325 High Est: \$650



Lot #300-Spanish colonial style, 12 light, iron light fixture. ca. 1920. 31" t x 24" w. USD LowEst: \$225 High Est: \$350



Lot #301-1920's American, six arm, brass chandelier. ca. 1920. 16" t x 27" w. USD LowEst: \$125 High Est: \$250



Lot #302 - French Louis XIV style, four light, bronze light fixture with six lions heads decorating the top. ca. 1900. 11" t x 13" w. USD LowEst: \$375 High Est: \$550



Lot #307- Four French Louis XVI style bronze light fixtures with etched glass shades. ca. 1910. 13" x 8". USD LowEst: \$450 High Est: \$700



Lot #308 - German wooden, six arm, light fixture. ca. 1910. 24" t x 27" w. USD LowEst: \$50 High Est: \$100



Lot #303- French Louis XIV style, four light, bronze light fixture with six lions heads decorating the top. ca. 1900. 11" t x 13" w. USD LowEst: \$375 High Est: \$550



Lot #304-French Louis XVI style, bronze and crystal, light fixture. ca. 1910. 10" x 11". USD LowEst: \$125 High Est: \$250



Lot #309 -Dutch chippendale style brass, eight arm, light fixture. ca. 1920. 27" t x 30" w. USD LowEst: \$150 High Est: \$300



Lot #310 -French provincial style, three arm, wrought iron light fixture. ca. 1920. 18" t x 16" w. USD LowEst: \$75 High Est: \$150



Lot #305-French Louis XVI style, bronze and crystal, light fixture. ca. 1910. 10" x 11". USD LowEst: \$125 High Est: \$250



Lot #306- Arts & crafts style American, brass, gas & electric sconce with two etched shades. ca. 1910. 15" t x 14" w. USD LowEst: \$125 High Est: \$250



Lot #311- French Louis XVI style bronze, ten light, chandelier with satin glass center globe. ca. 1920. 24" t x 29" w. USD LowEst: \$175 High Est: \$250



Lot #312-French provincial style hanging light fixture. ca. 1920. 29" t x 21" w. USD LowEst: \$250 High Est: \$375



Lot #313-Unusual French art nouveau style gas sconce with lotus leaf design. 14" t x 10" d.
USD LowEst: \$125 High Est: \$250



Lot #314 - Pair of 1920's reversed painted art deco style boudoir lamps. Flake on one shade. ca. 1920. Signed Bellova. 12" t x 6" w. USD LowEst: \$100 High Est: \$175



Lot #319- 18 assorted antique shades. ca. 1900-1950.
USD LowEst: \$50 High Est: \$200



Lot #320 - Two birds of paradise blue lamp shade. Linen fold design. Hand decorated. ca. 1920.
USD LowEst: \$75 High Est: \$150



Lot #315- B&H embossed parlor lamp with hand decorated shade. Electrified. ca. 1880. 18" t x 10" w.
USD LowEst: \$75 High Est: \$125



Lot #316 -Capodimonte Lamp with figure of woman in hat. ca 1960. 32" t x 16" w.
USD LowEst: \$175 High Est: \$300



Lot #321 -Set of six decorated shades. ca. 1920
USD LowEst: \$75 High Est: \$150



Lot #322 -Seven decorated shades. ca. 1920.
USD LowEst: \$60 High Est: \$90



Lot #317-Pair of Paul Herzel Carilian copper clad bookends. ca. 1920. 10" t. USD LowEst: \$50 High Est: \$125



Lot #318- 22 assorted antique shades. 1900-1950.
USD LowEst: \$50 High Est: \$100



Lot #323 - Set of four, cased glass, draped design shades. ca. 1920. USD LowEst: \$60 High Est: \$90



Lot #324-Set of six, cut glass, gas shades. ca. 1890. American. 4". USD LowEst: \$100 High Est: \$275



Lot #325-Set of three cut glass 4" shades. ca. 1890
USD LowEst: \$50 High Est: \$150



Lot #326 - 13 assorted shades. ca. 1900-1920.
USD LowEst: \$50 High Est: \$100



Lot #331- Six French style alabaster shades. ca. 1910.
USD LowEst: \$100 High Est: \$175



Lot #332 - Set of nine French alabaster shades. ca. 1910.
USD LowEst: \$100 High Est: \$175



Lot #327- Four large decorated shades. 2 1/4" fitters. ca. 1920. USD LowEst: \$50 High Est: \$100



Lot #328 -Set of six French art glass shades. ca. 1930.
USD LowEst: \$100 High Est: \$175



Lot #333 -Set of three French style alabaster shades. ca. 1910. USD LowEst: \$50 High Est: \$100



Lot #334 -Six French style alabaster shades. ca. 1920
USD LowEst: \$50 High Est: \$100



Lot #329- Six French style alabaster shades. ca. 1910
USD LowEst: \$100 High Est: \$175



Lot #330- Five French style alabaster shades. ca. 1910.
USD LowEst: \$100 High Est: \$175



Lot #335 - Set of three, art deco style, art glass, fan shaped inserts for chandelier or sconce. ca. 1920.
USD LowEst: \$50 High Est: \$100



Lot #336-Set of six, art deco style, art glass for chandelier or sconce. ca. 1920. USD LowEst: \$50 High Est: \$100



Lot #337-Set of three matching 4" gas shades with etched pattern. ca. 1890. USD LowEst: \$50 High Est: \$100



Lot #338 -Set of two matching 4" gas shades with floral etched pattern.ca. 1890. USD LowEst: \$50 High Est: \$100



Lot #343- 17 matching French style art glass shades. Cased floral design. 2 1/4" fitter. USD LowEst: \$150 High Est: \$300



Lot #344 - Pair of French cameo cut art glass shades (1 shade damaged). USD LowEst: \$50 High Est: \$90



Lot #339-Six French Louis XV style floral design, amber, satin glass shades. ca. 1920. USD LowEst: \$100 High Est: \$175



Lot #340 -Five French Louix XV style amber satin glass shades. ca. 1920. USD LowEst: \$100 High Est: \$175



Lot #345 -Set of four cut glass acorn shades.3" fitter. ca. 1910. USD LowEst: \$40 High Est: \$90



Lot #346 -Set of three cut glass, tear drop shaped shades. 3" fitter. ca. 1900. USD LowEst: \$50 High Est: \$90



Lot #341-Ten French Louis XV style, floral design, satin glass shades. ca. 1920. USD LowEst: \$100 High Est: \$175



Lot #342- Set of six art glass shade. 2 1/4" fitter. USD LowEst: \$100 High Est: \$175



Lot #347 -Set of four hand blown art glass shades. ca. 1920. USD LowEst: \$40 High Est: \$75



Lot #348-28 assorted shades for chandelier som matching. ca. 1900-1930. USD LowEst: \$75 High Est: \$150



Lot #349-Victorian art glass, 4" thumb print with pinched shade. ca. 1880. USD LowEst: \$40 High Est: \$70



Lot #350 -34 assorted shades for chandelier. ca. 1900-1920 USD LowEst: \$50 High Est: \$175



Lot #355- 20 various shades USD LowEst: \$40 High Est: \$65



Lot #356 - Dutch style porcelain, six arm, decorated chandelier. ca. 1920. 25" t x 30" w USD LowEst: \$75 High Est: \$150



Lot #351-22 assorted shades for chandelier. USD LowEst: \$50 High Est: \$100



Lot #352 -11 matching milk glass shades. 2 1/4" fitter. ca. 1920. USD LowEst: \$50 High Est: \$100



Lot #357 -Early walnut lap top writing desk. ca. 1870. 10" w x 4" x 9" d. USD LowEst: \$75 High Est: \$150



Lot #358 -Child tricycle. 8 1/2" t x 11" L. USD LowEst: \$50 High Est: \$90



Lot #353-9 matching milk glass shades. 2 1/4" fitter. ca. 1920. USD LowEst: \$50 High Est: \$100



Lot #354-3 Victorian cone shaped shades. USD LowEst: \$40 High Est: \$65



Lot #359 -Swartchild & Co. watch part boxes. Five drawers. ca. 1920.11" x 7". USD LowEst: \$50 High Est: \$90



Lot #360-"ALERT" gaud clock. ca. 1905 5" d USD LowEst: \$100 High Est: \$250



Lot #361-Yamaha FG260 12 string guitar and case
USD LowEst: \$75 High Est: \$250



Lot #362 -African mask - big lip. Wood carved. ca. 1900.
26”t. USD LowEst: \$275 High Est: \$550



Lot #367- 6 southwestern pots by various artists.
USD LowEst: \$50 High Est: \$100



Lot #368 - Hand carved wooden soldier. 51” t
USD LowEst: \$75 High Est: \$200



Lot #363-African tribal carving. 46” t
USD LowEst: \$100 High Est: \$250



Lot #364 -African tribal carved wooden mask. 14” t
USD LowEst: \$75 High Est: \$125



Lot #369 -French gilted Louis XIV style mirror. ca. 1920.
42” t x 20” w USD LowEst: \$75 High Est: \$200



Lot #370 -Vintage style oval mirror. 49” t x 24” w.
USD LowEst: \$75 High Est: \$200



Lot #365-Tribal wood carving. 35” L
USD LowEst: \$50 High Est: \$125



Lot #366-Indian pot, southwestern. Signed Jesus Pina. 9” t
x 10” w. USD LowEst: \$75 High Est: \$200



Lot #371 - “Kitchen Maid” oak kitchen cabinet. ca. 1920.
68” t x 26” d x 42” w. USD LowEst: \$150 High Est: \$300



Lot #372-French figural Louis XVI style mantel clock. “La
Source” by F. Moreau. Porcelain Dial. Time and bell strike.
Works signed L. Marti. ca. 1890. 13” t x 19” w.
USD LowEst: \$400 High Est: \$600